

RETAIL SPACE FOR LEASE



FIFTH AVENUE PLACE

425 1 Street SW, Calgary, Alberta

Unit 101 - 2,950 SF

Unit 201 - 979 SF

Unit 203 - 395 SF

Unit 209 - 485 SF

TAURUSGROUP.COM

HEATHER WIETZEL

Direct: (403) 206-6046

hwietzel@taurusgroup.com



ABOUT

BUILDING HIGHLIGHTS

Fifth Avenue Place is a two tower complex that encompasses 1.5 million square feet of office space with 48,273 square feet of retail area.

- Complex includes a large food court, drug store and several other amenity retailers
- Centrally located and connected in all four directions to the plus 15
- Recently completed exterior and interior common area renovations
- Co-tenancies include: OEB Breakfast, Bank of Montreal, Monogram Coffee, Catania Market & Deli, Freshii, Subway and more



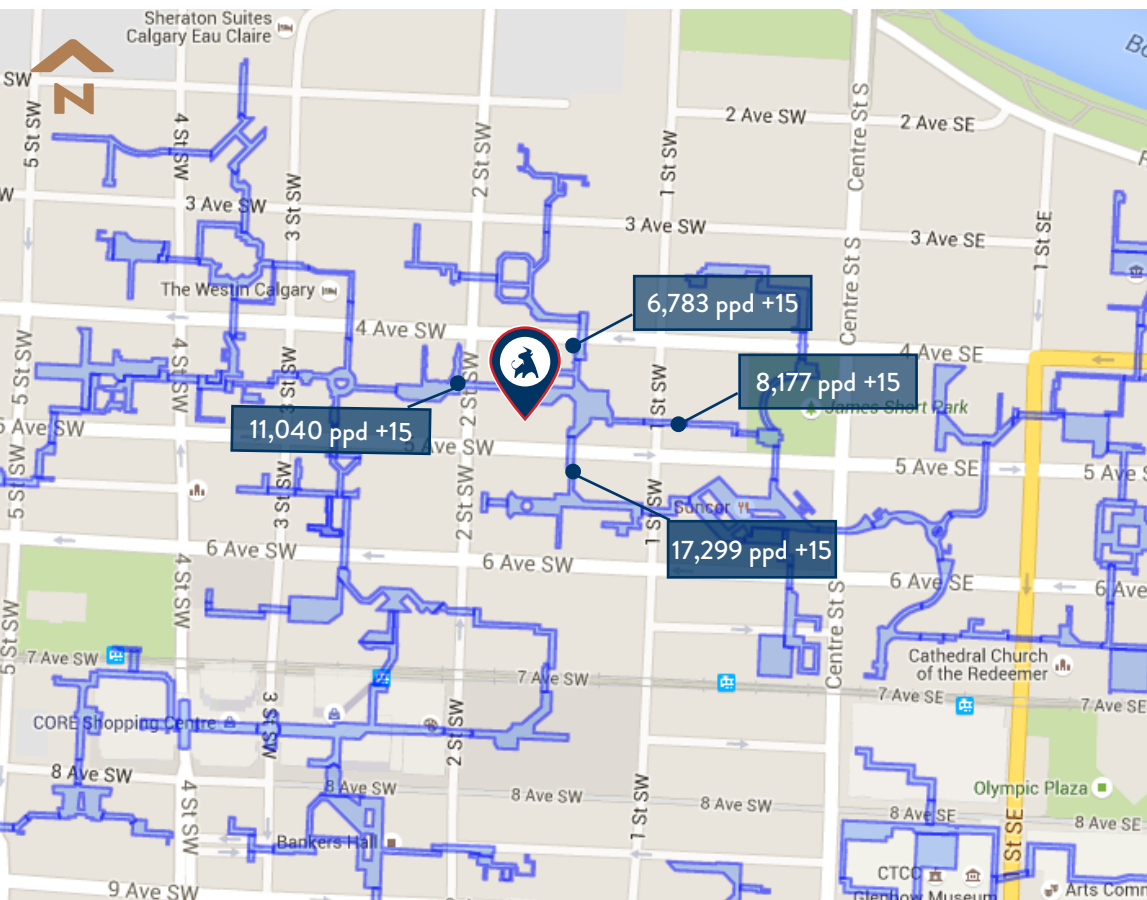
ABOUT

LOCATION HIGHLIGHTS

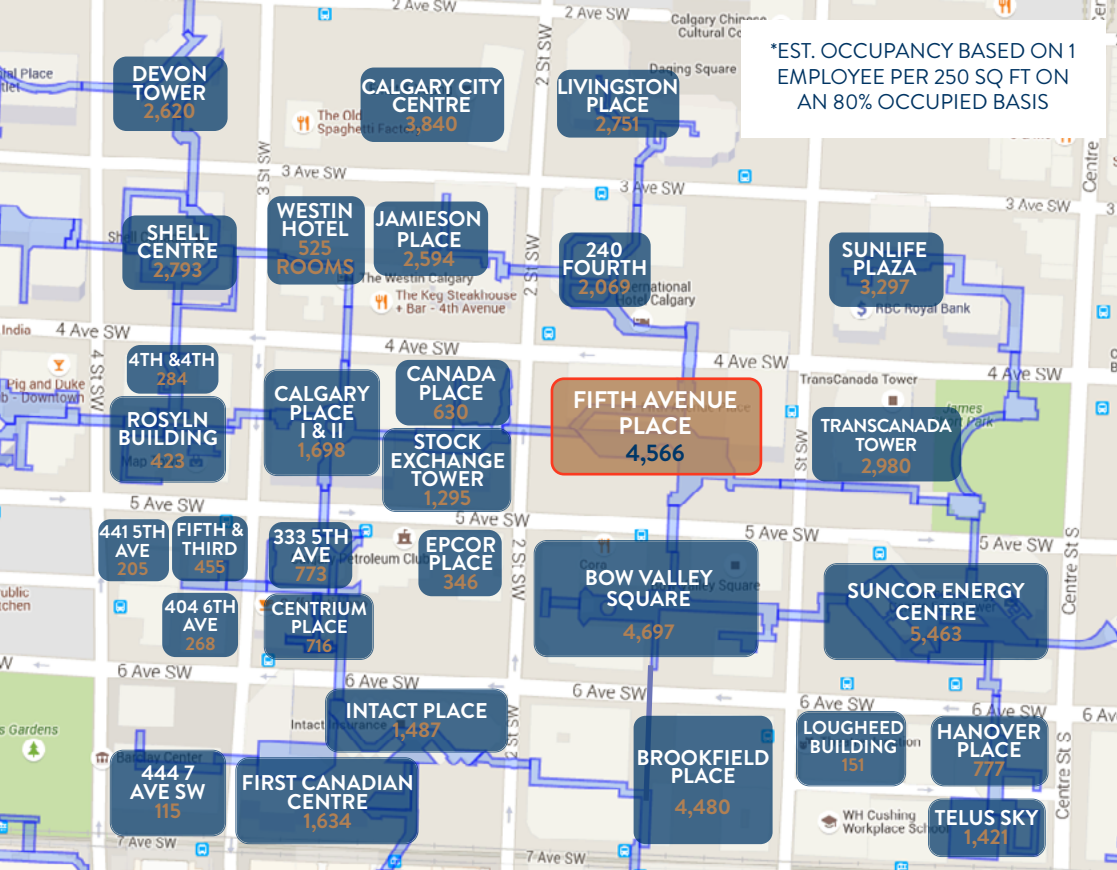
[VIEW ON GOOGLE MAPS](#)

- Covers the entire block between 4th and 5th Avenue, with 48,273 square feet of retail servicing an employment population of more than 18,000

- Directly connected to Stock Exchange Tower, Canada Place, TCPL Tower, Bow Valley Square and 240 Fourth



The information contained herein is confidential and provided solely for review purposes. It is not to be used for any other purpose or made available to any other person without the prior written consent of Taurus Property Group. The information was compiled from data furnished by sources deemed reliable. Every effort has been made to ensure accuracy of the information at the time of its compilation, but it is not guaranteed and no representation or warranty as to its accuracy or completeness is implied.



COMMUNITY

DEMOGRAPHIC DATA



RESIDENTIAL POPULATION

Downtown: 19,119
Calgary (2025): 1,688,000



DAYTIME POPULATION

Downtown: 110,062
300M Radius: 16,994



BUILDING

PROPERTY DETAILS

CENTRE SQUARE FOOTAGE

Building Size: 1.5M sq ft
Retail Size: 48,273 sq ft

LANDLORD

Brookfield Properties

ZONING

CM-2

PARKING

791 underground stalls

MUNICIPAL ADDRESS

425 1 Street SW, Calgary, Alberta

YEAR BUILT

1981

NUMBER OF STORES

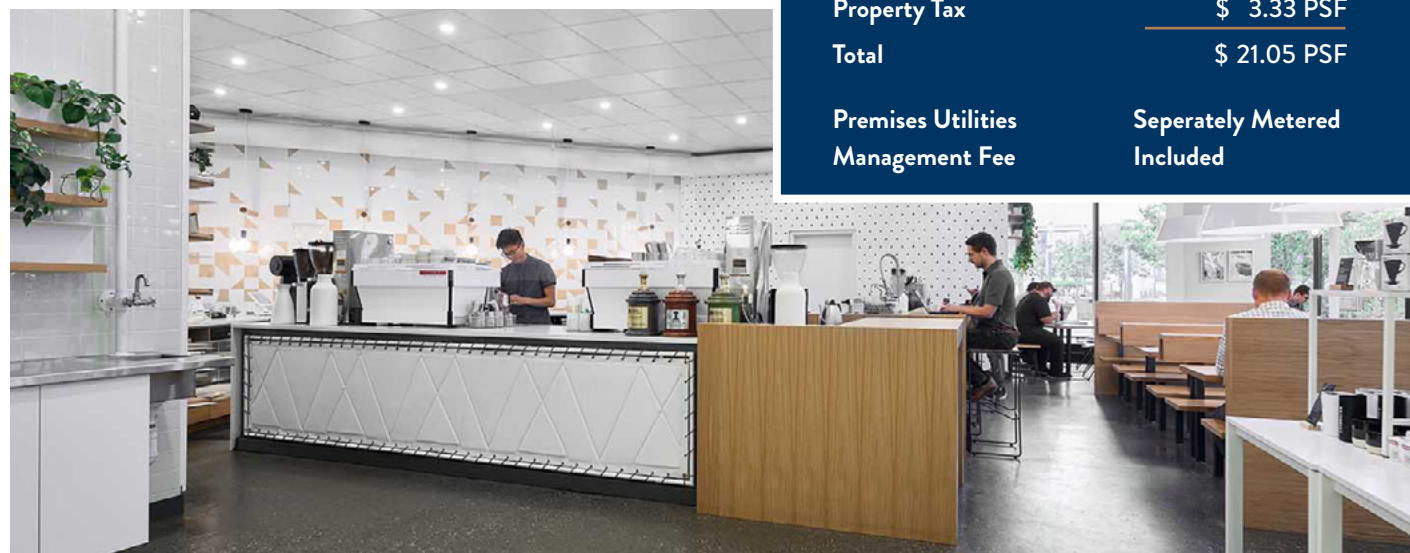
32



ADDITIONAL RENT 2026 ESTIMATES

| | |
|-----------------|---------------------|
| Operating Costs | \$ 17.72 PSF |
| Property Tax | \$ 3.33 PSF |
| Total | \$ 21.05 PSF |

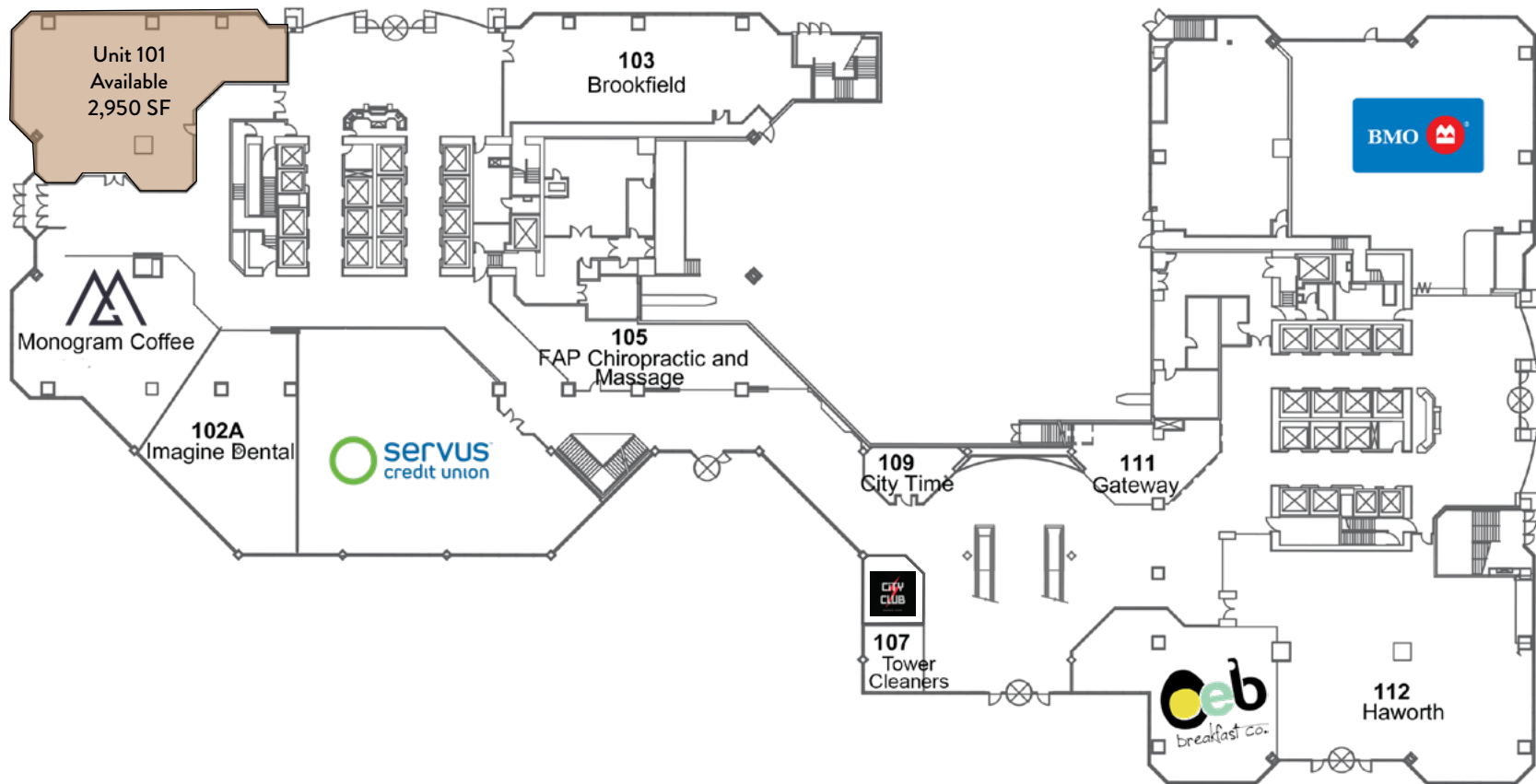
| | |
|--------------------|--------------------|
| Premises Utilities | Seperately Metered |
| Management Fee | Included |



TENANTS



MAIN FLOOR

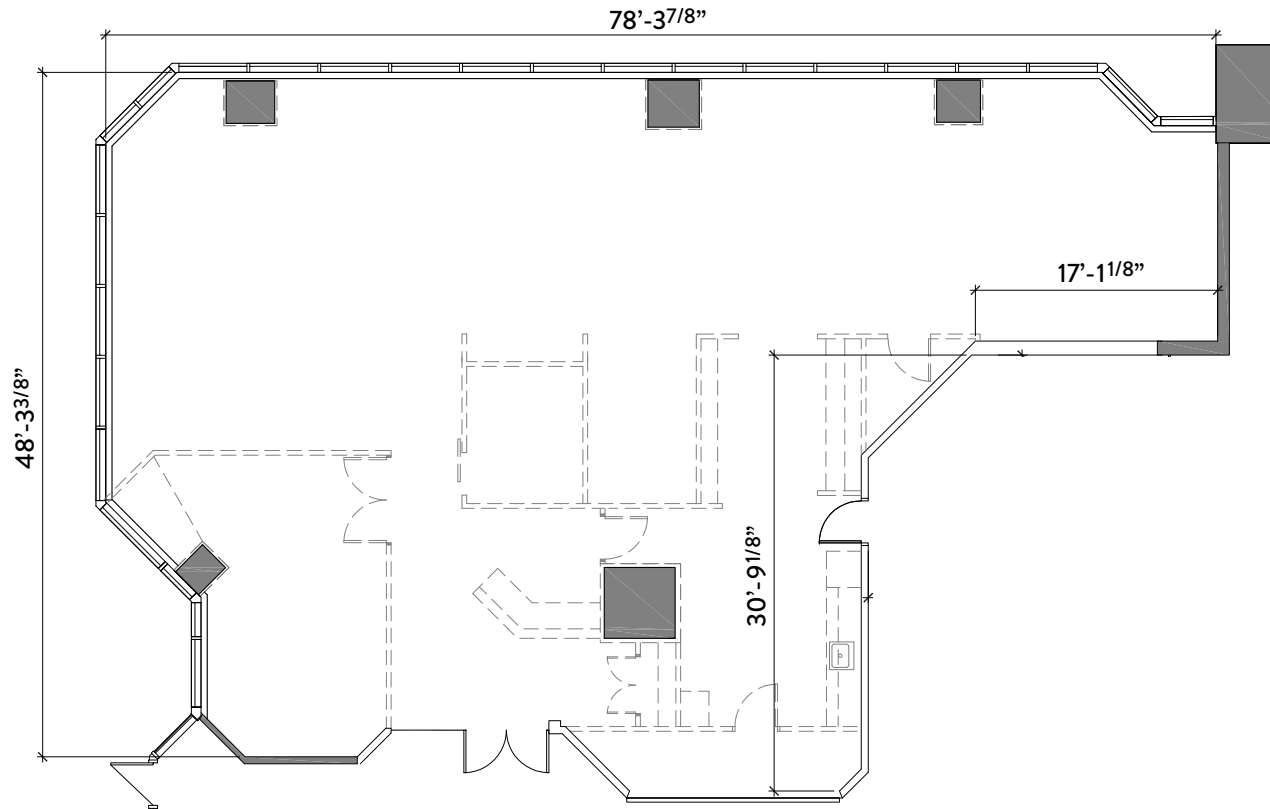


SECOND FLOOR



UNIT PLAN

UNIT #101



UNIT

101

RETAIL AREA

2,950 Square Feet

CEILING HEIGHT

11' to Grid; 14.5' Above Grid

POWER

40A, 120/208V

HVAC

Existing Distributed HVAC for
Standard Office User

WATER

1" Line

SEWER

2" Line Ties Into 4" Line

GAS

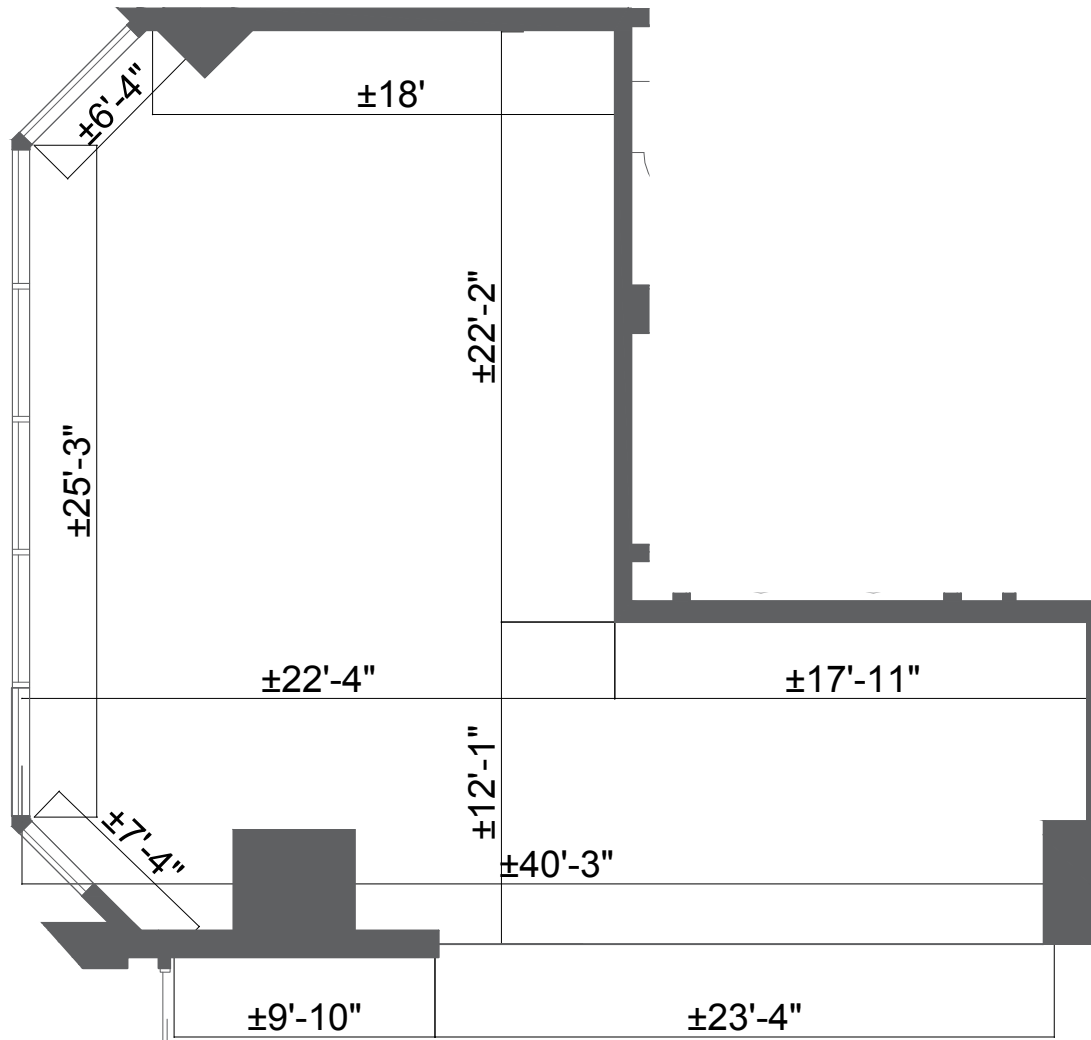
No

GARBAGE

Loading Dock

UNIT PLAN

UNIT #201



UNIT

201

RETAIL AREA

979 Square Feet

CEILING HEIGHT

11'8"

POWER

60A

HVAC

Two Units; VAV 8" & 10"

WATER

3/4" Line

SEWER

2 1/2" Line

GAS

No

GARBAGE

Loading Dock

UNIT 201



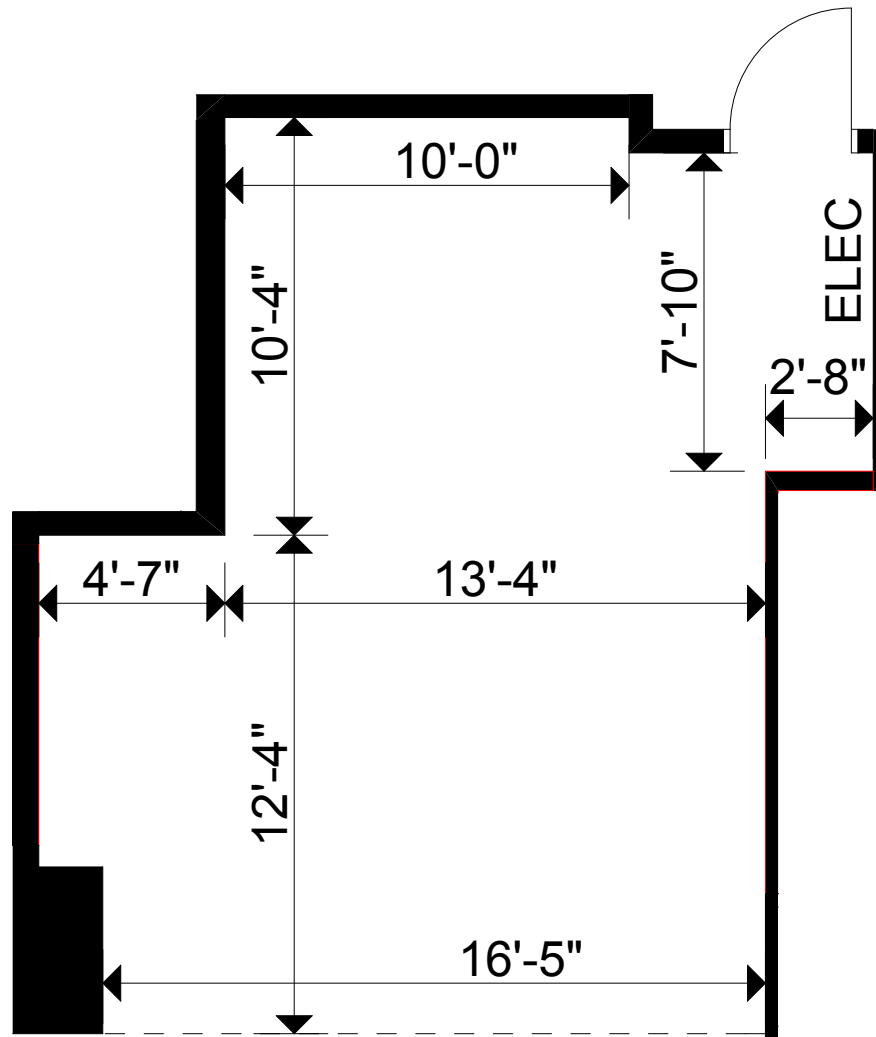
Current Space



Proposed Rendering

UNIT PLAN

UNIT #203



UNIT

203

RETAIL AREA

395 Square Feet

POWER

60A, 600V – 1 panel 42 circuits
225A, 208/120V

HVAC

1.5 Tons

MUA

1,019 CFM

KITCHEN EXHAUST

Newly installed - 1,900 CFM

WATER

1" Line

SEWER

4" Line

GAS

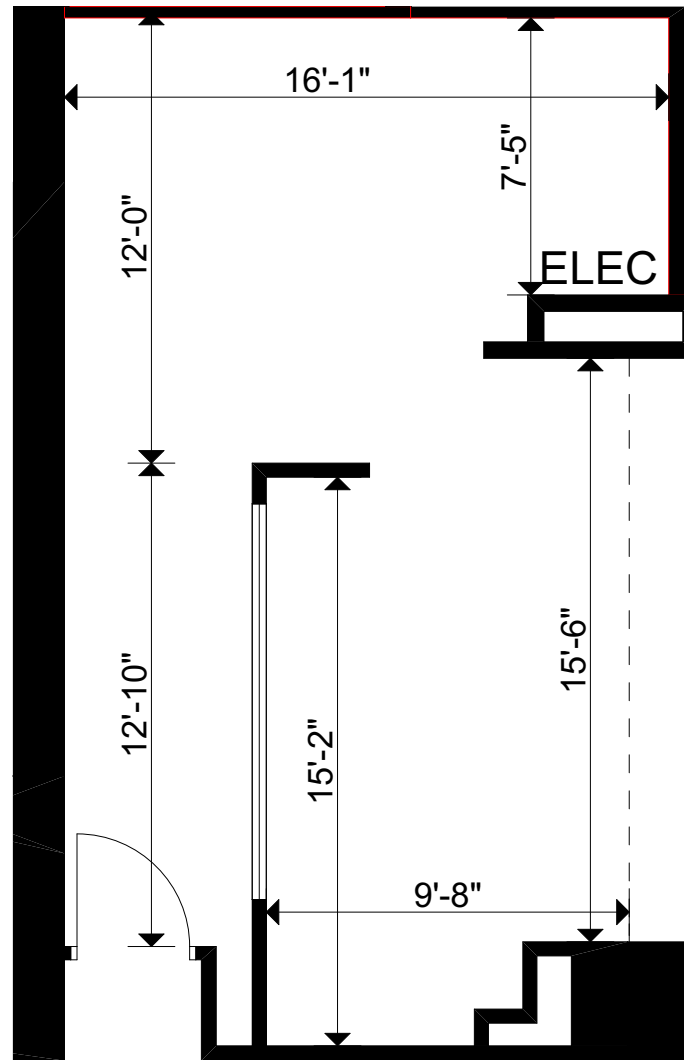
No

GARBAGE

Loading Dock

UNIT PLAN

UNIT #209



UNIT

209

RETAIL AREA

485 Square Feet

CEILING HEIGHT

15'

POWER

100A, 600V; Includes Two
225A Panels with Breakers

HVAC

Two Units; VAV 6"
Min 300 CFM, Max 600 CFM

MUA

Common MUA;
55,000CFM for Entire Fan

WATER

1 1/4" Line

SEWER

3" Line

GARBAGE

Loading Dock

LOADING

West Service Elevators

STORAGE

Leasable Units in Parkade

CONNECT WITH US

CONTACT

GENERAL



Corporate: (403) 206-2131
Leasing: (403) 206-2130



Suite 1150, 333 11 Avenue SW,
Calgary, Alberta, T2R 1L9



inquiries@taurusgroup.com



taurusgroup.com

ABOUT THIS LISTING

HEATHER WIETZEL



Direct: (403) 206-6046



Suite 1150, 333 11 Avenue SW,
Calgary, Alberta, T2R 1L9



hwietzel@taurusgroup.com

ADVISOR AND ADVOCATE FOR OWNERS AND DEVELOPERS OF RETAIL AND MIXED USE PROPERTY

We conduct ourselves at all times with integrity, with the objective of building long-term relationships based on trust and positive results; our primary focus is on building and sustaining the value of our clients' assets over time.

