



EVOLUTION EAST VILLAGE

550 6 Avenue SE, Calgary, Alberta

Retail Availability: CRU 6 - 1,545 SF

TAURUSGROUP.COM

HEATHER WIETZEL

Direct: (403) 206-6046
hwietzel@taurusgroup.com



ABOUT

BUILDING HIGHLIGHTS

Evolution showcases a retail podium at the base of two residential towers with over 450 occupied condos.

- Located in East Village, a master-planned, mixed-use urban village in east downtown Calgary with a current resident population of 4,000 and expected to grow to 11,500 at build out
- Canada's first 'urban' Superstore location recently opened south of site
- 950 hotel rooms in a 5 minute walk radius



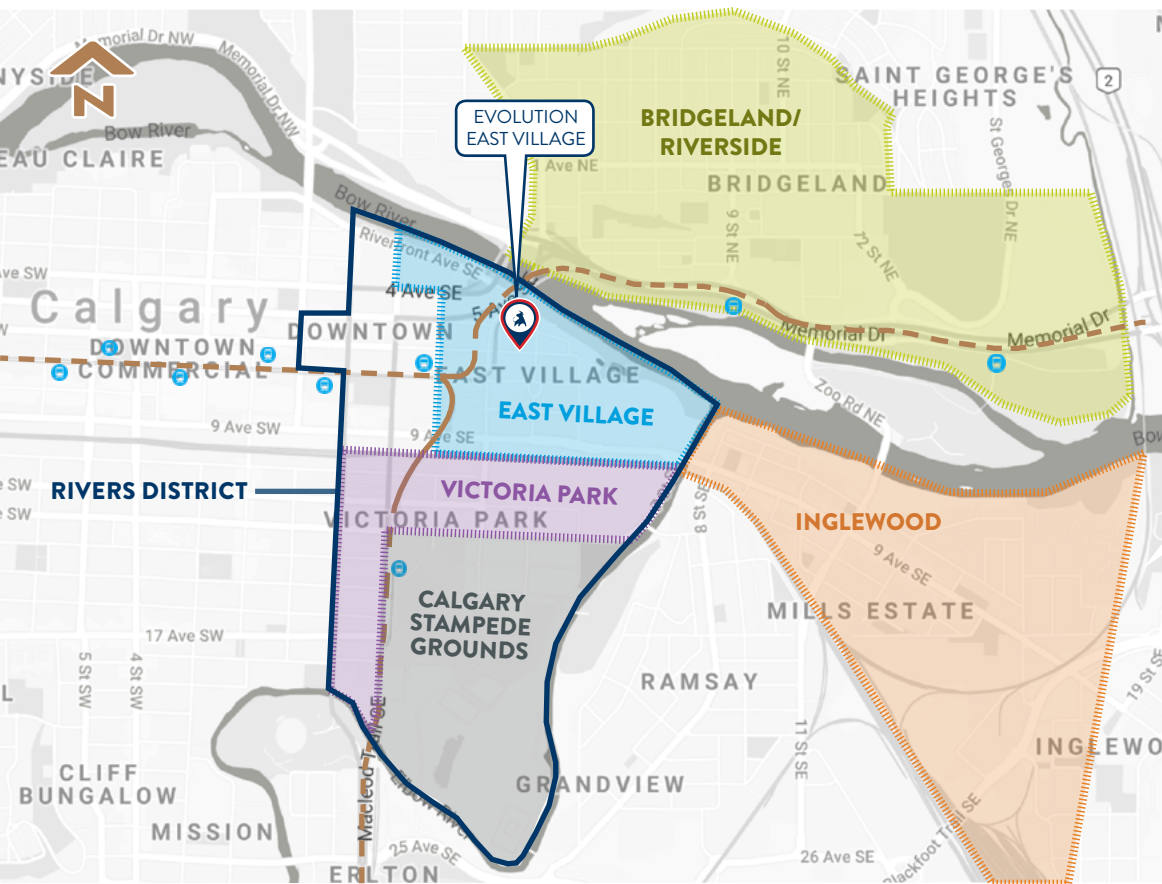
VIEW ON GOOGLE MAPS

VIEW REDEVELOPMENT PLAN

ABOUT

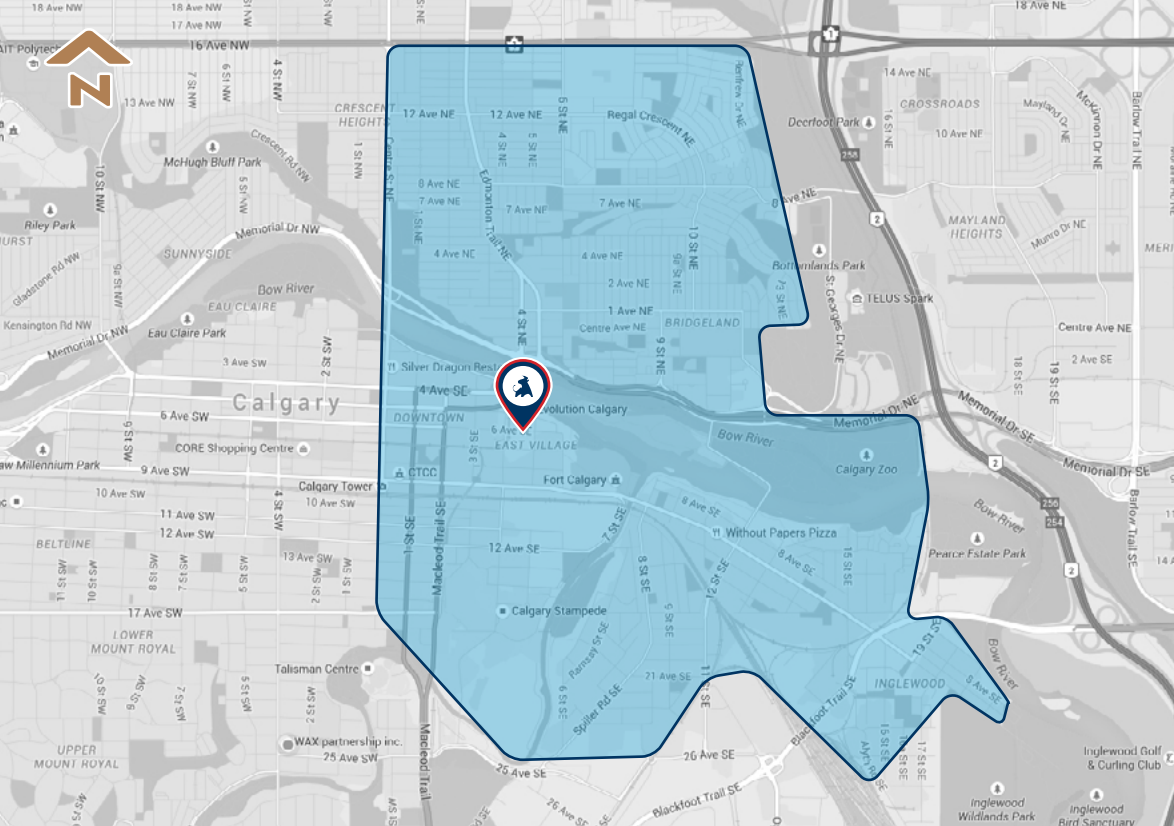
LOCATION HIGHLIGHTS

- East of Arris, a mixed-use development with a Real Canadian Superstore, Shoppers Drug Mart, Scotiabank and Olympia Liquor
- East Village is home to the Central Library, Studio Bell Music Centre, Platform Innovation Centre and The Confluence Historic Site and Parkland (formerly known as Fort Calgary)
- Directly connects the communities of Bridgeland, Inglewood and Victoria Park
- Located within the Rivers District: a 20 year vision that will result in the addition of 4 million square feet of mixed-use space and another 8,000 people to Victoria Park



EAST VILLAGE OVERVIEW





COMMUNITY

DEMOGRAPHIC DATA



POPULATION

Primary: 31,298
Calgary (2025): 1,688,000



DAYTIME POPULATION

Primary: 65,581



AVERAGE AGE

Primary: 41.2
Calgary (2025): 38.9



HOUSEHOLD INCOME

Primary: \$103,652
Calgary (2025): \$131,600



HOUSEHOLD SIZE

Primary: 1.7
Calgary: 2.6



EDUCATION

Primary: 78.2%
Calgary: 71.0%

BUILDING

PROPERTY DETAILS

CENTRE SQUARE FOOTAGE

17,108 sq ft

LANDLORD

Embassy Bosa Inc.

ZONING

CC-EMU

MUNICIPAL ADDRESS

550 6 Avenue SE, Calgary, Alberta

YEAR BUILT

2015

LEGAL DESCRIPTION

Plan: 1211562

Block: 126

Lot: 4

ADDITIONAL RENT 2025 ESTIMATES

Operating Costs	\$ 13.89 PSF
Property Tax	\$ 13.87 PSF
Total	\$ 27.76 PSF

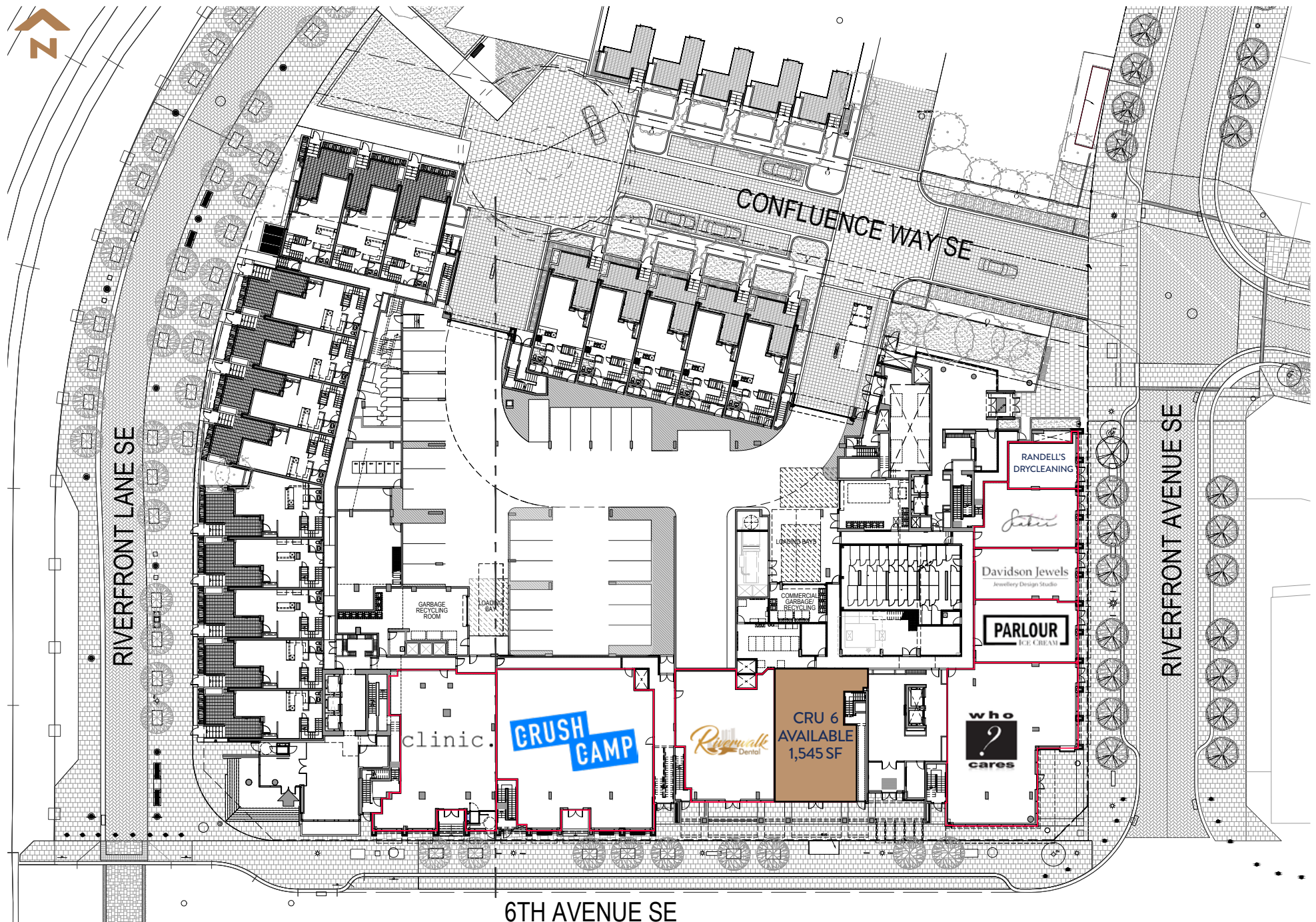
Premises Utilities	Separately Metered
Management Fee	Included



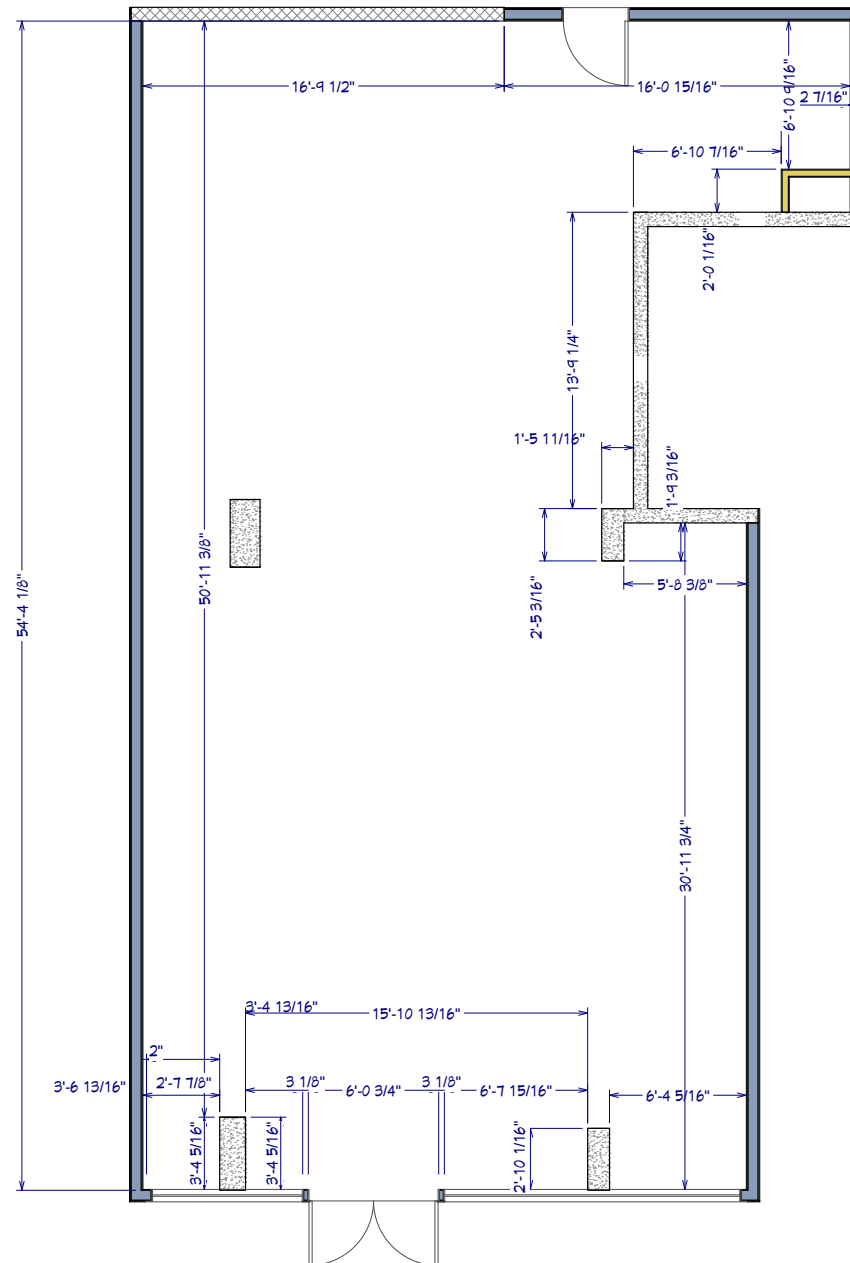
TENANTS



SITE PLAN



CRU #6



6

1,545 Square Feet

21' Floor to Underside of Second Slab

100A, 120/208V

WATER

SEW

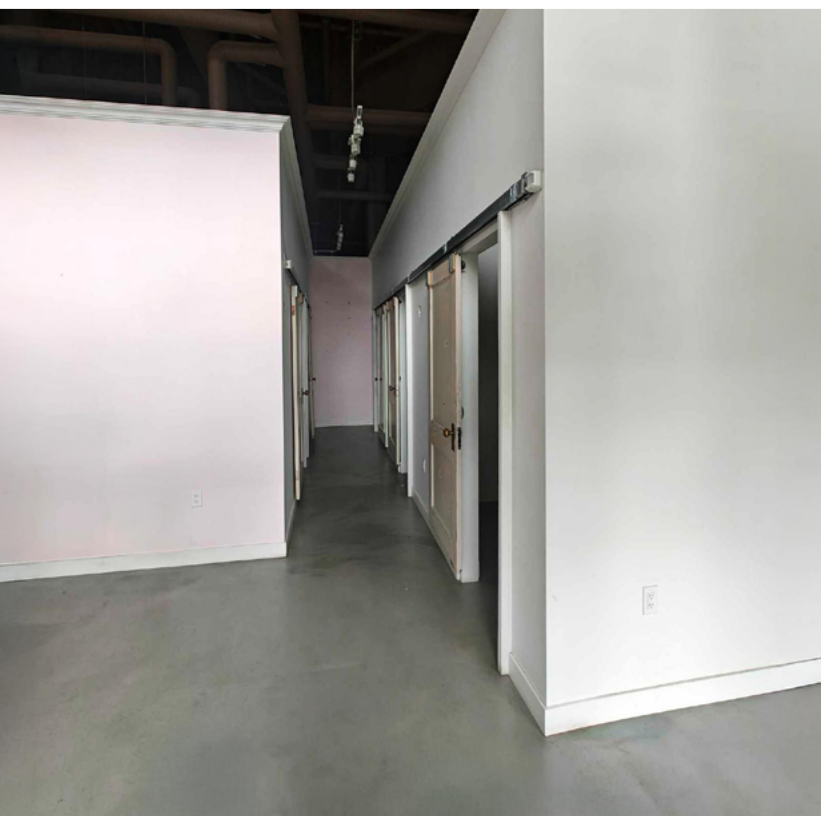
2" line

Yes

Built out salon space

The information contained herein is confidential and provided solely for review purposes. It is not to be used for any other purpose or made available to any other person without the prior written consent of Taurus Property Group. The information was compiled from data furnished by sources deemed reliable. Every effort has been made to ensure accuracy of the information at the time of its compilation, but it is not guaranteed and no representation or warranty as to its accuracy or completeness is implied.

CRU 6 PHOTOS



EAST VILLAGE



CONNECT WITH US

CONTACT

GENERAL



Corporate: (403) 206-2131
Leasing: (403) 206-2130



Suite 1150, 333 11 Avenue SW,
Calgary, Alberta, T2R 1L9



inquiries@taurusgroup.com



taurusgroup.com

ABOUT THIS LISTING

HEATHER WIETZEL



Direct: (403) 206-6046



Suite 1150, 333 11 Avenue SW,
Calgary, Alberta, T2R 1L9



hwietzel@taurusgroup.com

ADVISOR AND ADVOCATE FOR OWNERS AND DEVELOPERS OF RETAIL AND MIXED USE PROPERTY

We conduct ourselves at all times with integrity, with the objective of building long-term relationships based on trust and positive results; our primary focus is on building and sustaining the value of our clients' assets over time.

