



# ELEVEN

1055 11 Street SW, Calgary AB

---

100% LEASED

HEATHER WIETZEL

Direct: (403) 206-6046

[hwietzel@taurusgroup.com](mailto:hwietzel@taurusgroup.com)

[TAURUSGROUP.COM](http://TAURUSGROUP.COM)



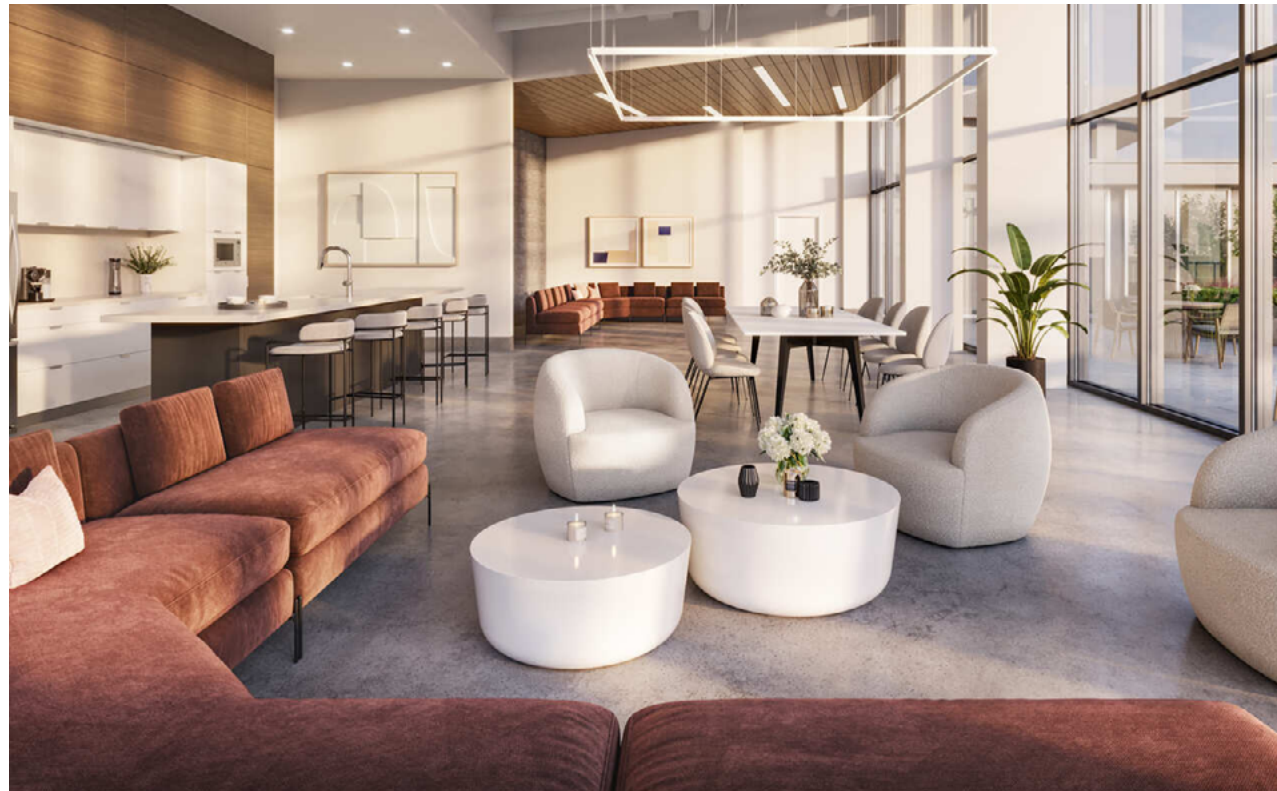


## ABOUT

# BUILDING HIGHLIGHTS

Eleven is a new 44-storey mixed-use development with a retail podium at the base of a residential tower.

- Situated on the corner of 11th Avenue and 11th Street SW - the tallest building in the Beltline
- Fully leased tower; comprised of 369 rental units
- Offers 20,000 square feet of indoor and outdoor amenities for residents including a lounge & media room, fitness centre, pet grooming room, outdoor patio and dog run



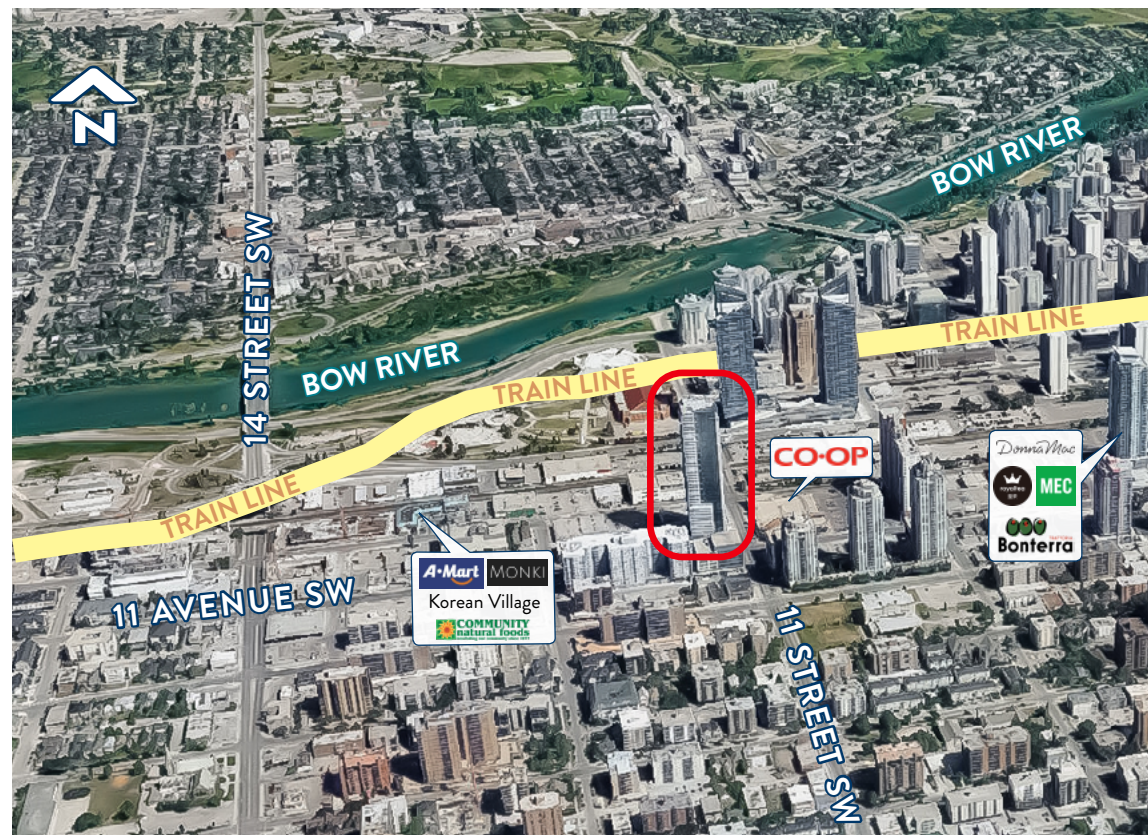
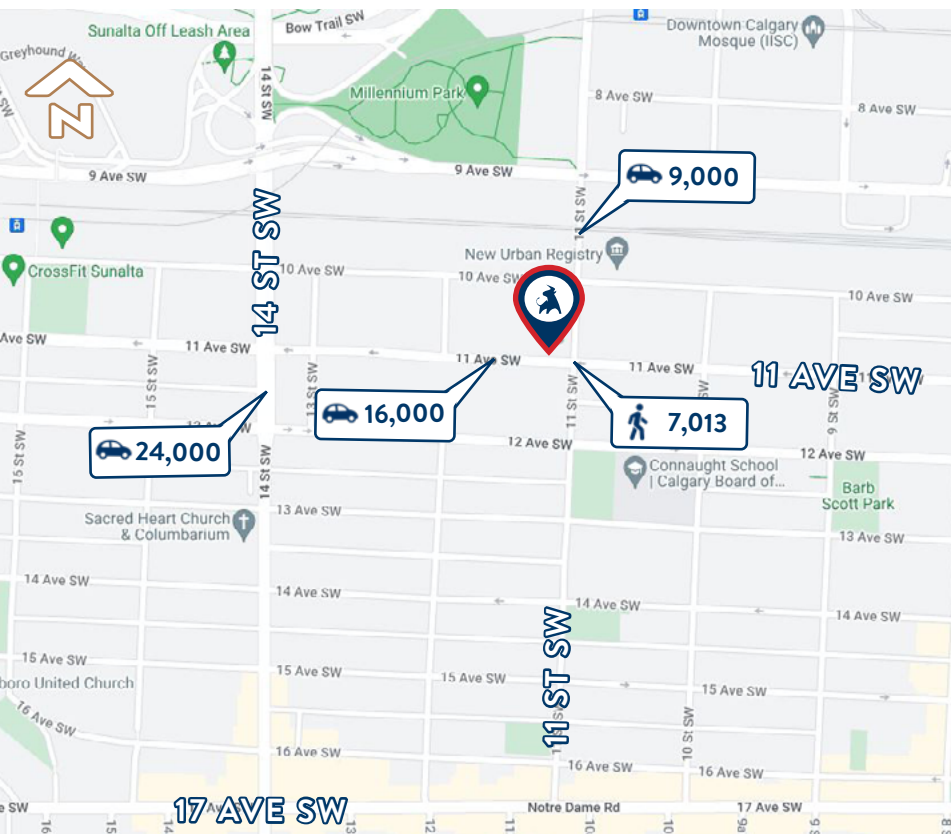


## ABOUT

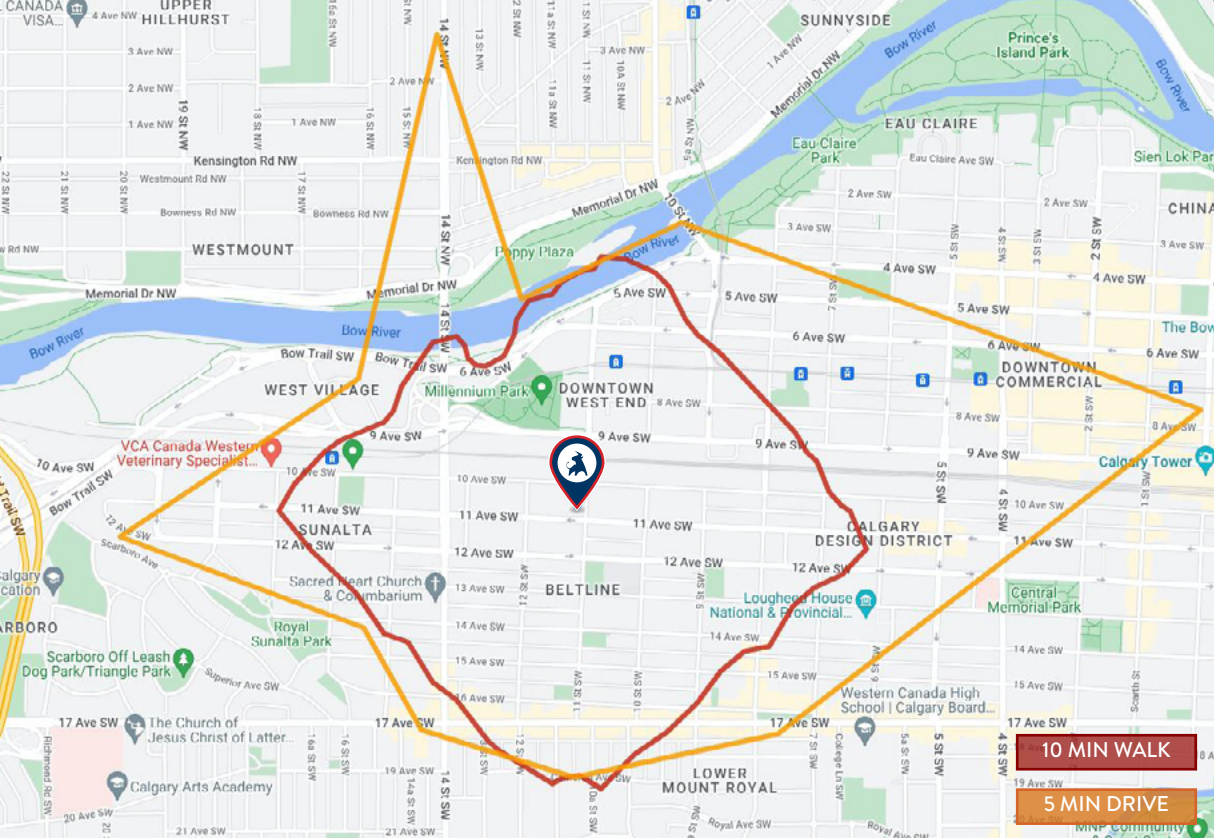
# LOCATION HIGHLIGHTS

[VIEW ON GOOGLE MAPS](#)

- Situated between downtown west end and Beltline district, offering exposure to a lively daytime and nightlife scene
- Five minute walk from EB Downtown West-Kerby CTrain Station, Millennium Park and Bow River Pathway
- Steps away from several highly acclaimed restaurants including: Donna Mac, Bridgette Bar, Monki Breakfast Club & Bistro and Bonterra Trattoria
- Densely populated trade area, with over 7,400 residential units within three-block radius







## COMMUNITY

# DEMOGRAPHIC DATA



## POPULATION

10 Min Walk:	17,016
5 Min Drive:	28,209
Calgary (2025):	1,688,000



### Surrounding Residential Towers

1. The Metropolitan - 430 units
2. The Cube - 65 units
3. 1111 11th Street SW - 416 units
4. The Arch - 158 units
5. Aura Tower - 150 units
6. Versus - 444 units
7. Hat @ 14th Street - 239 units
8. 1400 on 10th - 106 units
9. Sunalta Heights - 333 units
10. Hat @ 7th Avenue - 66 units
11. Calgary Place Apts - 304 units
12. Vantage Pointe - 350 units
13. Stella Nova - 353 units
14. Riverwest - 234 units



## DAYTIME POPULATION

10 Min Walk:	25,757
5 Min Drive:	74,532



## AVERAGE AGE

10 Min Walk:	37.0
5 Min Drive:	36.6
Calgary (2025):	38.9



## BUILDING

# PROPERTY DETAILS

## CENTRE SQUARE FOOTAGE

Building Size: 335,000 sq ft

Retail Size: 8,746 sq ft

## LANDLORD

Intergulf Development Group

## ZONING

CC-X (Centre City Mixed Use)

## PARKING

27 stalls for retailers and visitors

## MUNICIPAL ADDRESS

1055 11 Street SW, Calgary, Alberta

## YEAR BUILT

2022

## LEGAL DESCRIPTION

Plan: 0312975

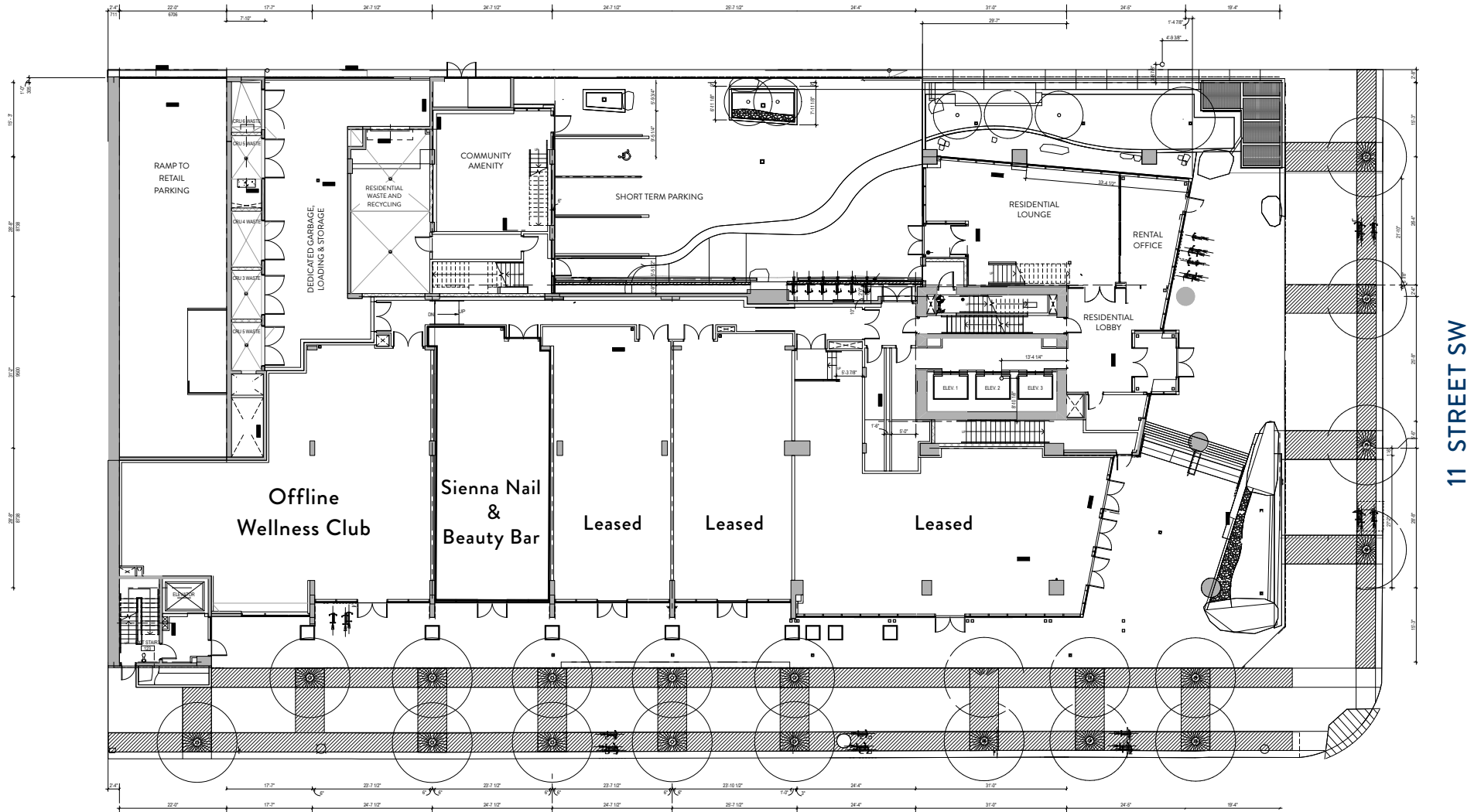
Block: 62

Lot: 43





# FLOOR PLAN - MAIN LEVEL



11 AVENUE SW

11 STREET SW



# PARKING MAP



2 HR STREET PARKING AVAILABLE

3 HR STREET PARKING AVAILABLE

9 HR STREET PARKING AVAILABLE



## CONNECT WITH US

# CONTACT

### GENERAL



Corporate: (403) 206-2131  
Leasing: (403) 206-2130



Suite 1150, 333 11 Avenue SW,  
Calgary, Alberta, T2R 1L9



[inquiries@taurusgroup.com](mailto:inquiries@taurusgroup.com)



[taurusgroup.com](http://taurusgroup.com)

### ABOUT THIS LISTING

#### HEATHER WIETZEL



Direct: (403) 206-6046



Suite 1150, 333 11 Avenue SW,  
Calgary, Alberta, T2R 1L9



[hwietzel@taurusgroup.com](mailto:hwietzel@taurusgroup.com)

## ADVISOR AND ADVOCATE FOR OWNERS AND DEVELOPERS OF RETAIL AND MIXED USE PROPERTY

We conduct ourselves at all times with integrity, with the objective of building long-term relationships based on trust and positive results; our primary focus is on building and sustaining the value of our clients' assets over time.

