



RETAIL SPACE FOR LEASE

CENTRIUM PLACE

332 6 Avenue SW, Calgary, Alberta

Retail Availability:

Unit 208 - 646 SF

Unit 232 - 1,195 SF

TAURUSGROUP.COM

HEATHER WIETZEL

Direct: (403) 206-6046
hwietzel@taurusgroup.com



ABOUT

BUILDING HIGHLIGHTS

Centrium Place is a 15-storey, first class office tower located on the corner of 6th Avenue and 3rd Street SW, in Calgary's downtown commercial district.

- Centrally located and connected to First Canadian Centre, Intact Place, 555 3 Avenue, and Fifth & Third through the Plus 15
- Plus 15 retail spaces exposed to high foot traffic from adjacent office towers and adjacent conference facility and fitness centre within the tower



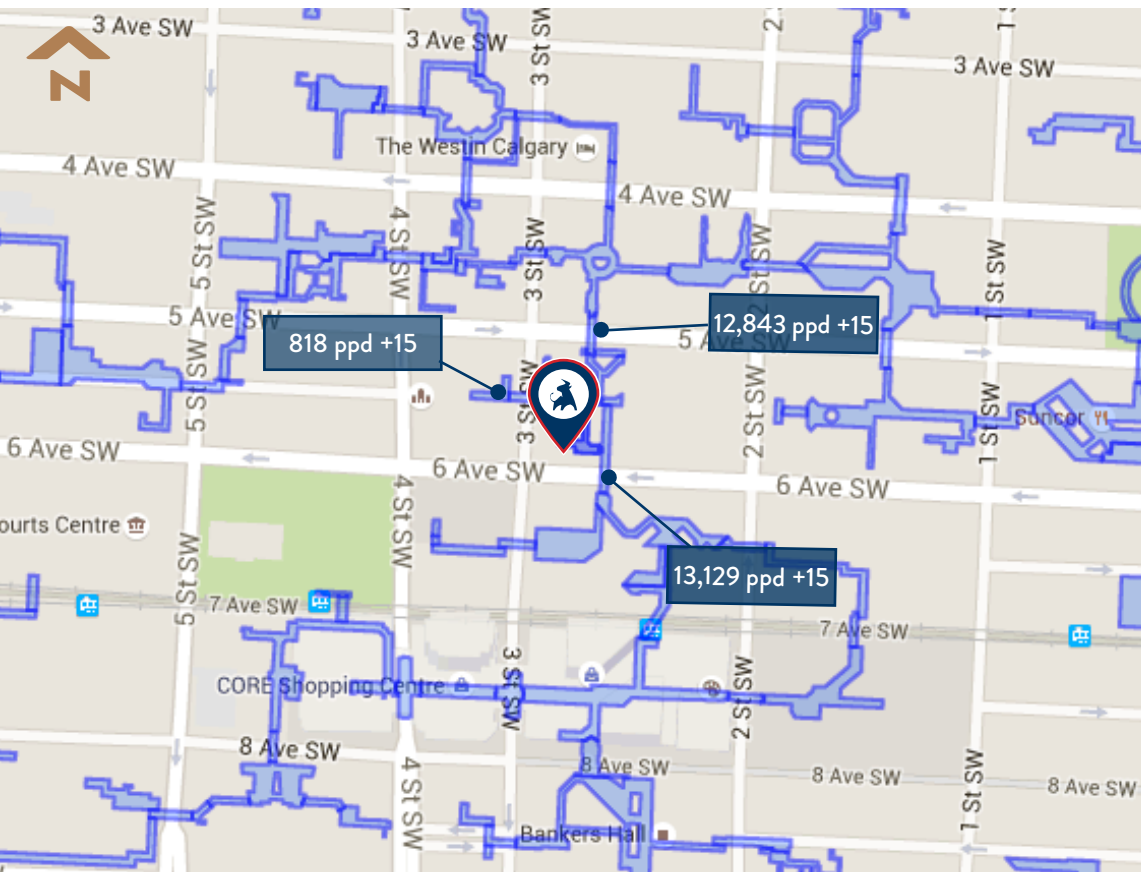
ABOUT

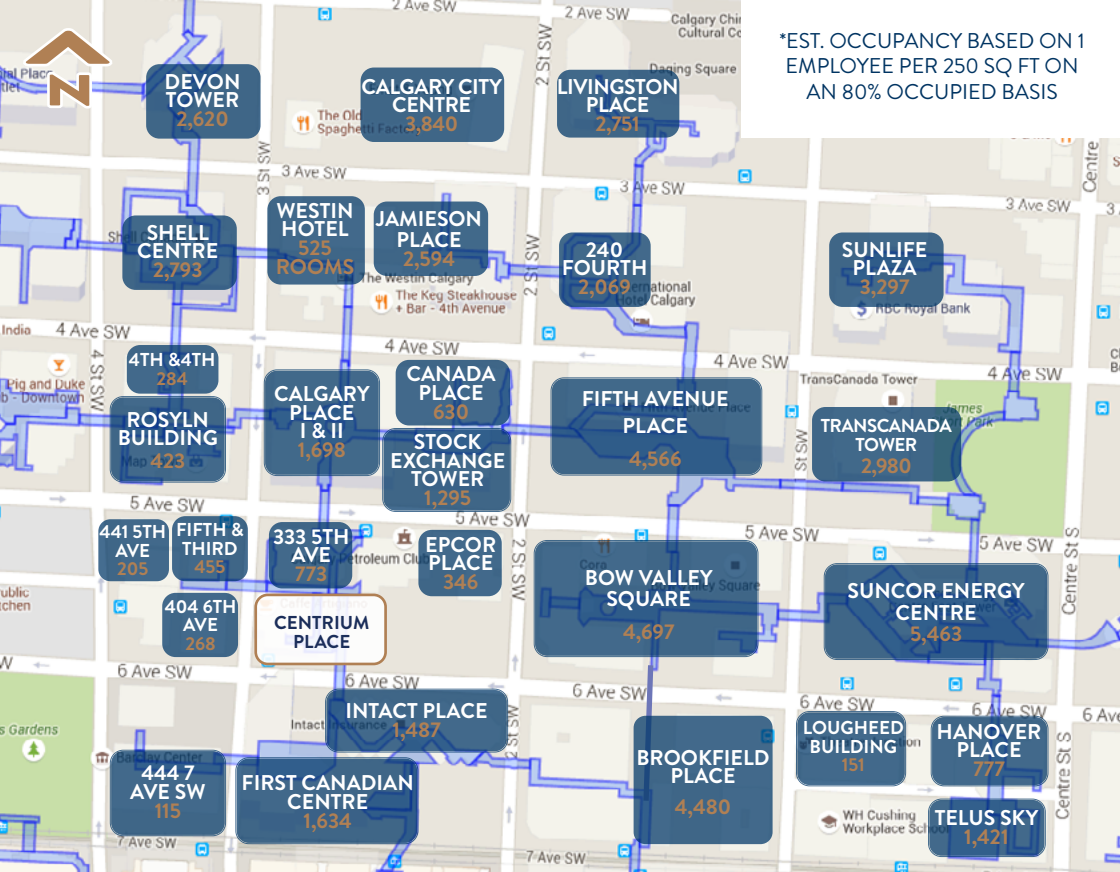
LOCATION HIGHLIGHTS

[VIEW ON GOOGLE MAPS](#)

- In the centre of Calgary's downtown core; one block from the LRT and serviced by 12 bus routes, including 3 express routes
- Daily plus 15 traffic counts over 14,000 from adjacent Plus 15 network

- Surrounded by thriving restaurants including Holy Grill, Deville Coffee, Monogram Coffee, Kabuku and Rooftop YYC
- Over 480 condominium units within a 3-block radius





COMMUNITY

DEMOGRAPHIC DATA



RESIDENTIAL POPULATION

Downtown: 18,980
Calgary (2025): 1,688,000



DAYTIME POPULATION

Downtown: 110,062
300M Radius: 24,001



BUILDING

PROPERTY DETAILS

CENTRE SQUARE FOOTAGE

Building Size: 223,767 SF

Retail Size: 3,813 SF

LANDLORD

Triovest Realty Advisors

ZONING

CR20 - C20/R20

PARKING

70 underground stalls
(1 stall per 3,197 SF)

MUNICIPAL ADDRESS

332 6 Avenue SW, Calgary, Alberta

YEAR BUILT

2007

LEGAL DESCRIPTION

Plan: 0512852

Block: 28

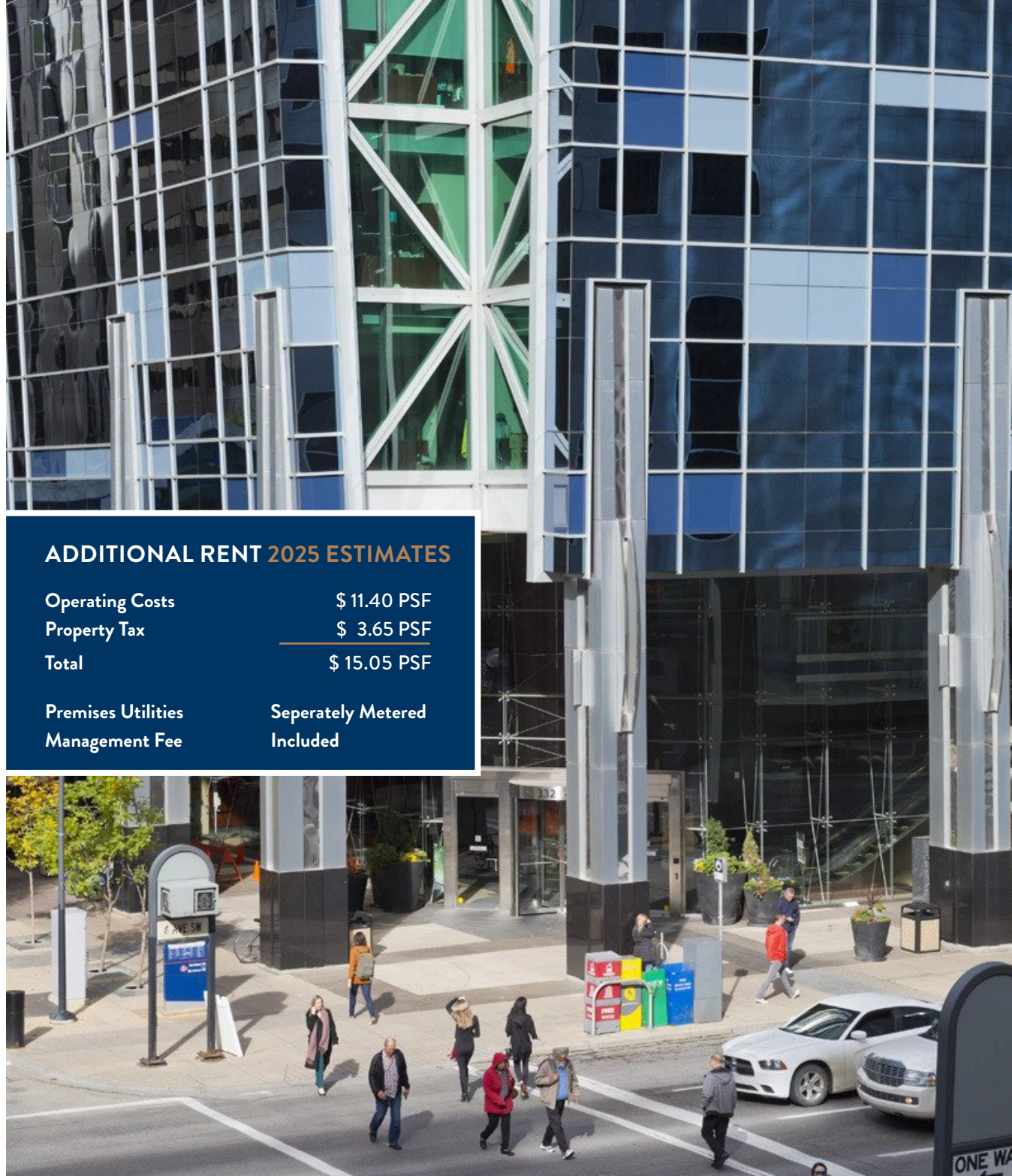
Lot: 41

Containing 0.185 Hectares (0.46 Acres) more or less. Excepting thereout all mines and minerals.

ADDITIONAL RENT 2025 ESTIMATES

Operating Costs	\$ 11.40 PSF
Property Tax	\$ 3.65 PSF
Total	\$ 15.05 PSF

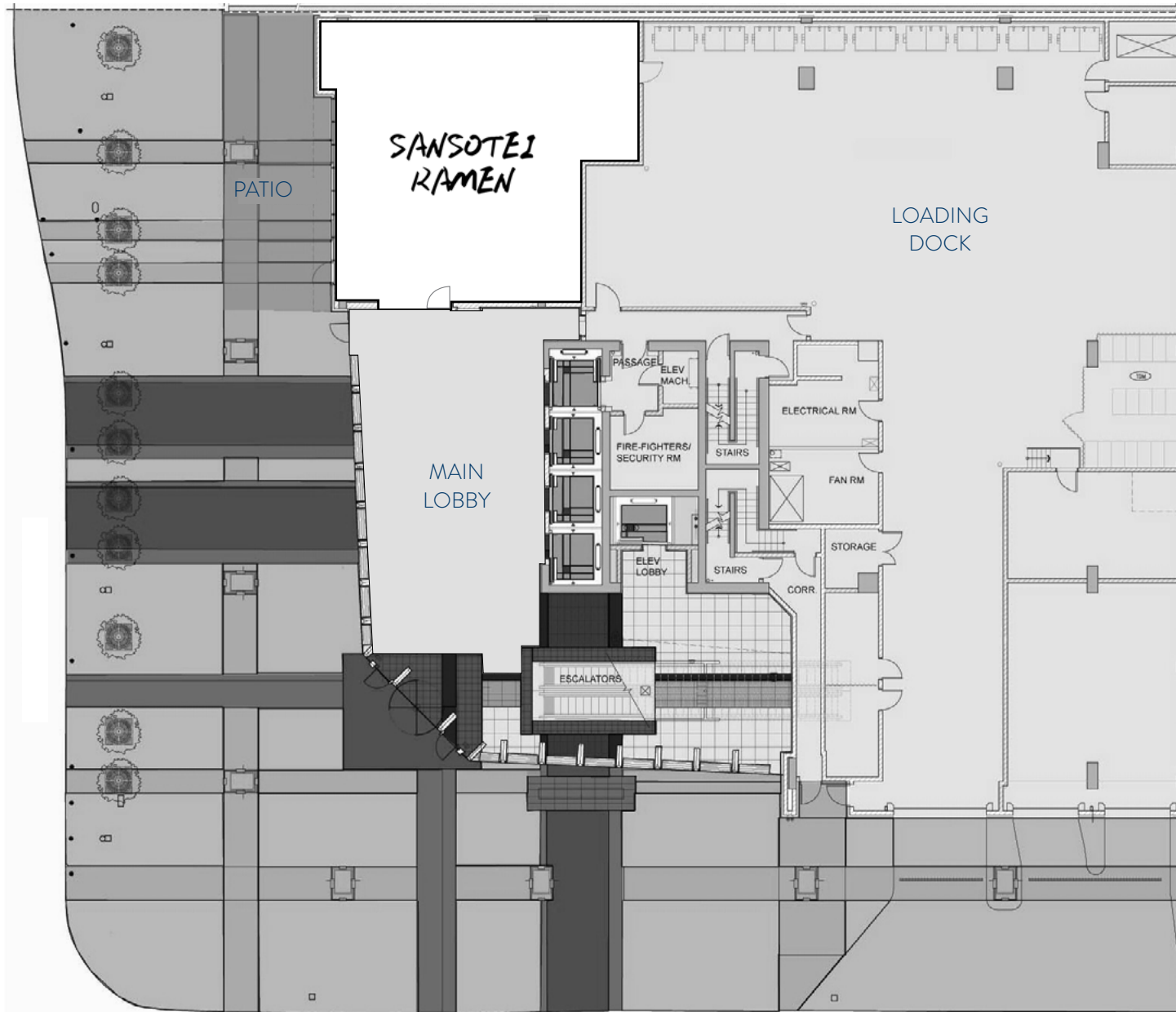
Premises Utilities	Seperately Metered
Management Fee	Included



MAIN FLOOR

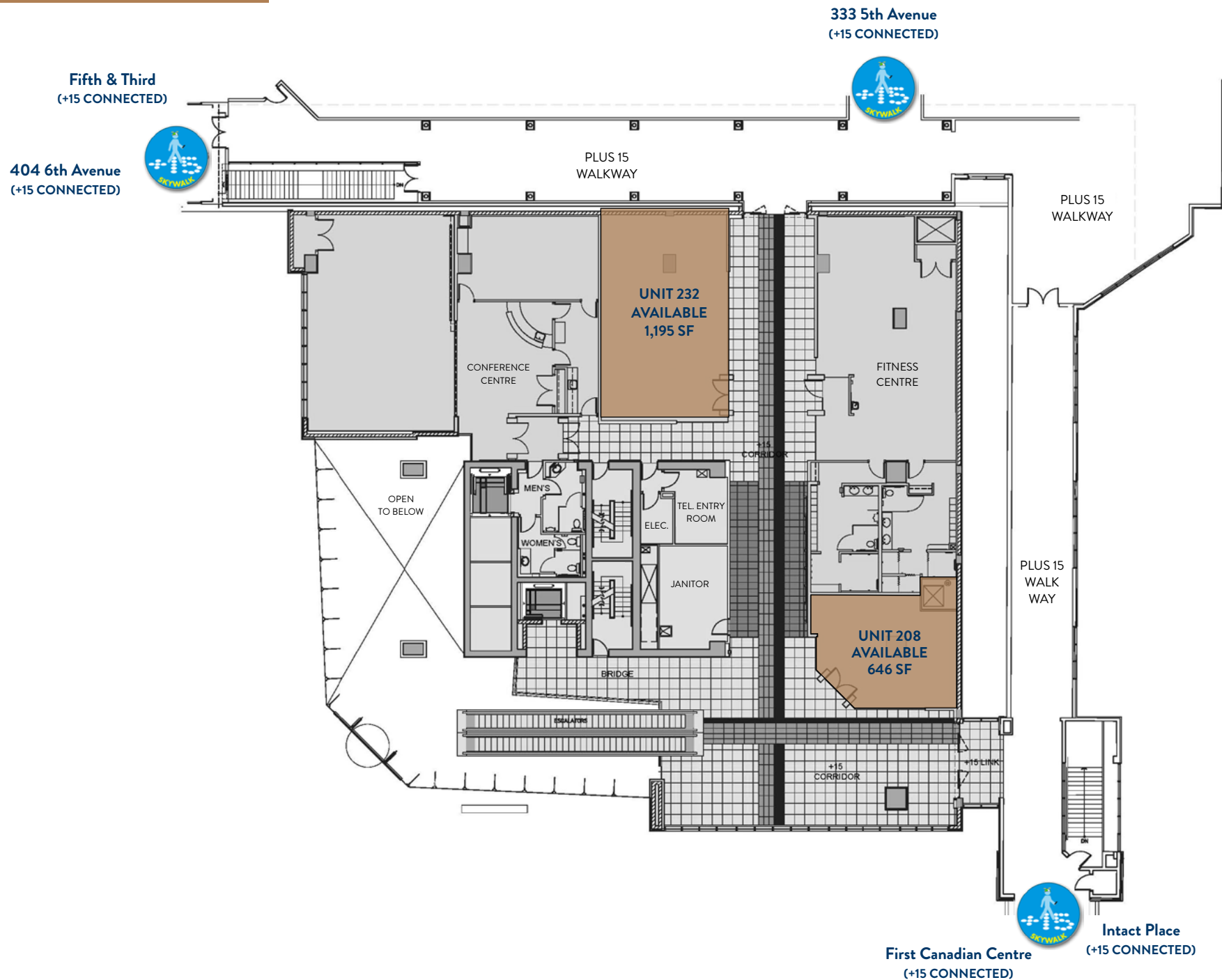


3 STREET SW



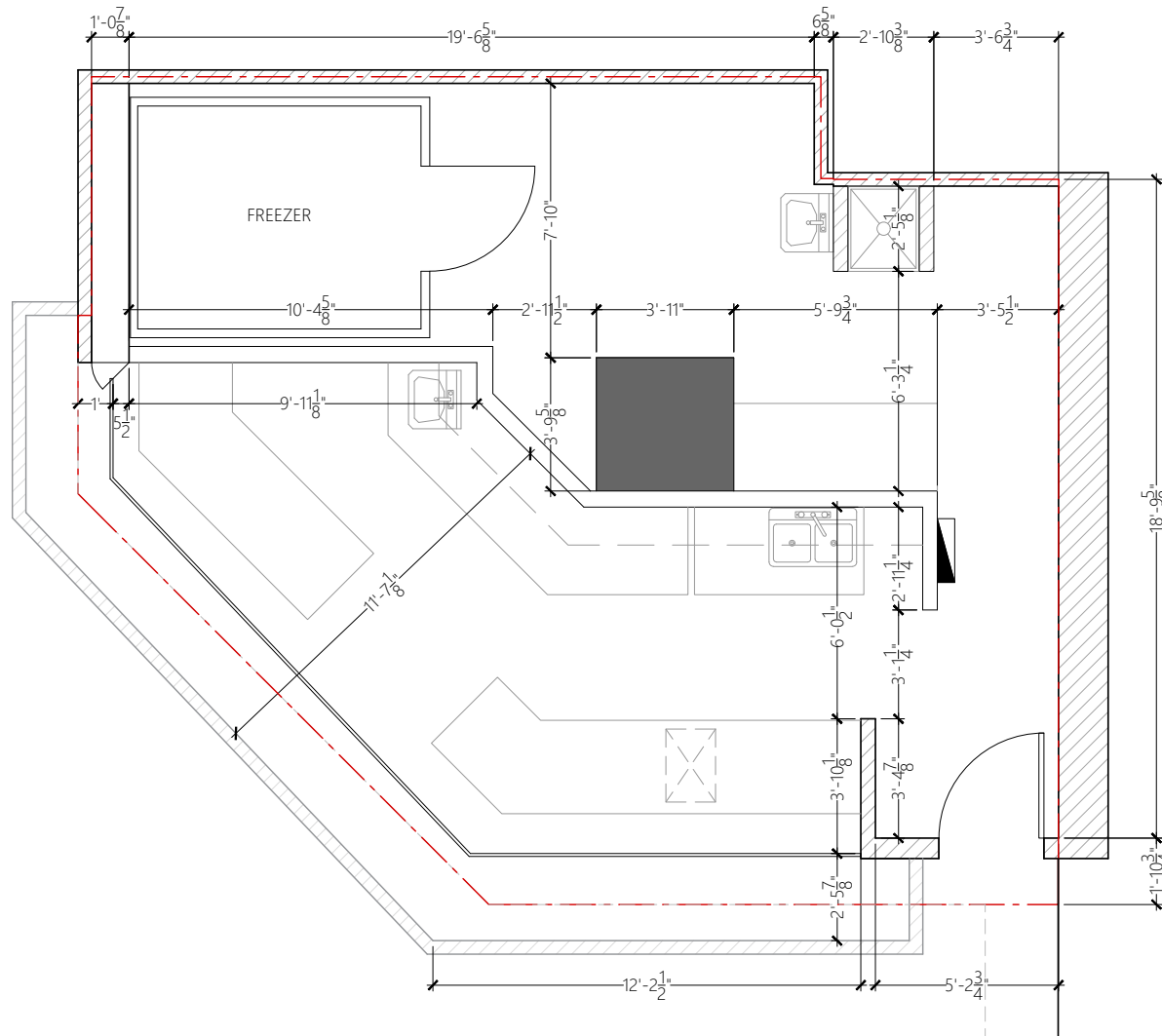
6 AVENUE SW

PLUS 15



UNIT PLAN

UNIT #208



UNIT

208

RETAIL AREA

646 Square Feet

CEILING HEIGHT

9' 10"

POWER

225A, 120/208V

HVAC

1.5 Tons

WATER

1.25" Line

GAS

No

SEWER

2" Line

GARBAGE

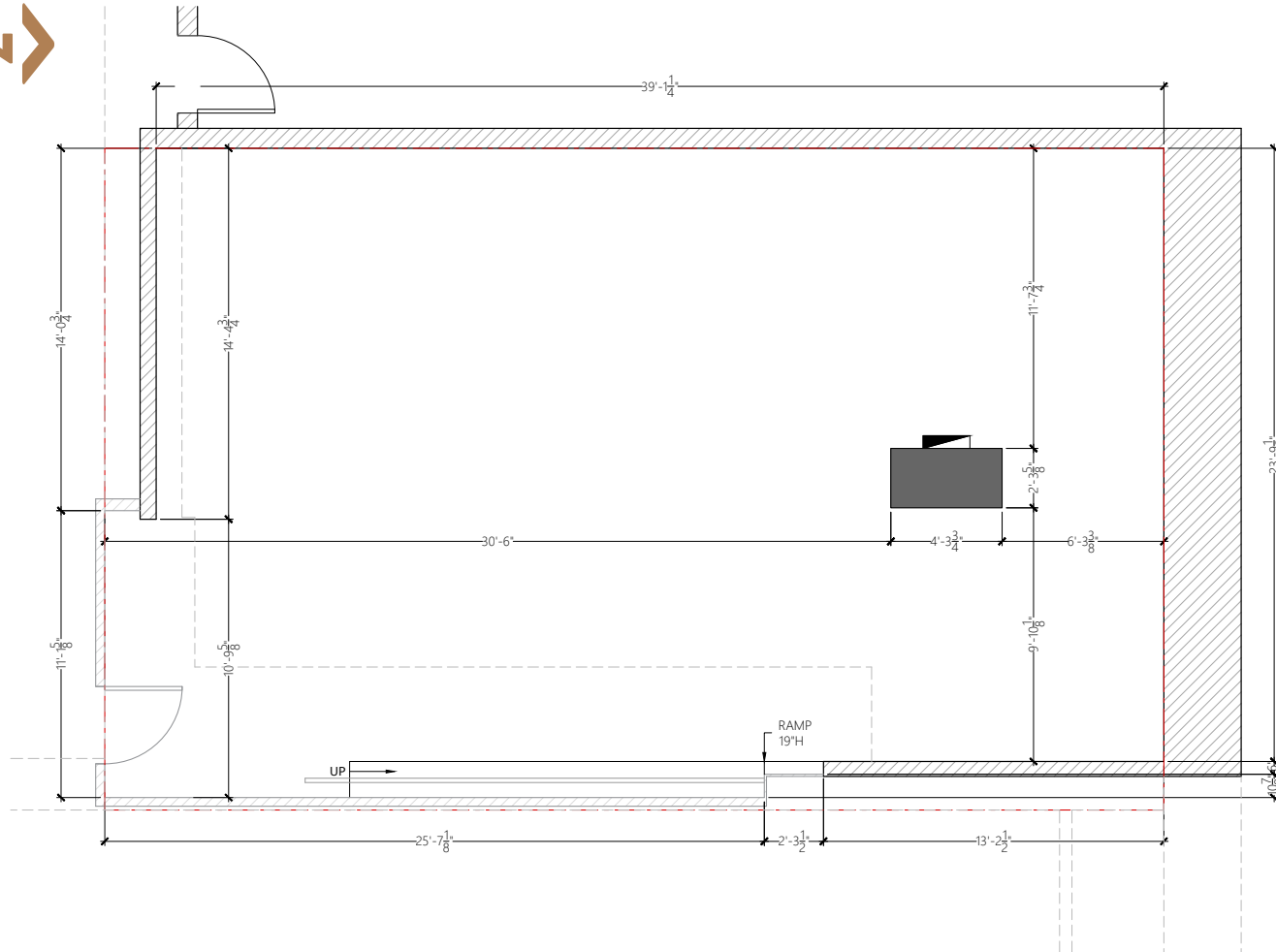
Main Floor

LOADING

Second Floor Service

UNIT PLAN

UNIT #232



UNIT

232

RETAIL AREA

1,195 Square Feet

CEILING HEIGHT

14'9"

POWER

225A, 120/208V

HVAC

3 Tons

WATER

1.25" Line

GAS

No

SEWER

2" Line

GARBAGE

Main Floor

LOADING

Second Floor Service

CONNECT WITH US

CONTACT

GENERAL



Corporate: (403) 206-2131
Leasing: (403) 206-2130



Suite 1150, 333 11 Avenue SW,
Calgary, Alberta, T2R 1L9



inquiries@taurusgroup.com



taurusgroup.com

ABOUT THIS LISTING

HEATHER WIETZEL



Direct: (403) 206-6046



Suite 1150, 333 11 Avenue SW,
Calgary, Alberta, T2R 1L9



hwietzel@taurusgroup.com

ADVISOR AND ADVOCATE FOR OWNERS AND DEVELOPERS OF RETAIL AND MIXED USE PROPERTY

We conduct ourselves at all times with integrity, with the objective of building long-term relationships based on trust and positive results; our primary focus is on building and sustaining the value of our clients' assets over time.

