

# GULF CANADA SQUARE

## DOWNTOWN CALGARY



[VIEW BROCHURE >>](#)

### PROPERTY HIGHLIGHTS

- A 20-storey office tower in downtown Calgary’s commercial district, with close proximity to Stephen Avenue and The Core Shopping Centre
- Connected to Bankers Hall and City Centre Parkade via Plus 15 network, which averages more than 25,500 pedestrians daily
- Two-level retail podium currently under renovation to create new amenities, an open plan lobby, modern tenant lounge and patio, conference centre, and contemporary exterior entrance
- Tenants include: Tim Hortons, Alforno Bakery, World Gym, Pronto Pizza-Pasta, LifeMark & more!

### SPACE FOR LEASE

<b>AVAILABLE</b>	345 - 4,490 square feet
<b>RETAIL SQ FT</b>	64,104 square feet
<b>LANDLORD</b>	GWL Realty Advisors
<b>YEAR BUILT</b>	1978

**TAURUS**  
PROPERTY GROUP

ABBY BILLARD  
C: 403.200.9935  
abillard@taurusgroup.com  
[www.taurusgroup.com](http://www.taurusgroup.com)

<b>SW &amp; SE CALGARY</b>	<b>NW &amp; NE CALGARY</b>	<b>DOWNTOWN CALGARY</b>
<b>FEATURED LISTING</b>	<b>GREATER ALBERTA</b>	<b>100% LEASED</b>

The information contained herein is confidential and provided solely for review purposes. It is not to be used for any other purpose or made available to any other person without the prior written consent of Taurus Property Group. The information was compiled from data furnished by sources deemed reliable. Every effort has been made to ensure accuracy of the information at the time of its compilation, but it is not guaranteed and no representation or warranty as to its accuracy or completeness is implied.

## SPRINGBOROUGH CENTRE - SW CALGARY

**AVAILABILITY:** 2nd floor: 2,905 sq ft 3rd floor: 770 sq ft ; 1,504 sq ft ; 1,399 sq ft ; 2,766 sq ft



[VIEW BROCHURE >>](#)

### COMMENTS

- Situated in West Calgary with 19 full time medical professionals
- Within the epicenter of the city’s most affluent neighbourhoods in terms of education and average income levels
- Abundant surface parking for staff and visitors
- Four schools and universities within one block of the centre with over 4,000 students
- Close proximity to the 69 Street LRT station

CONTACT: BRITTANY BAKER | [bbaker@taurusgroup.com](mailto:bbaker@taurusgroup.com) | 403.629.4662 | [www.taurusgroup.com](http://www.taurusgroup.com)

## ELEVEN - SOUTHWEST CALGARY

**AVAILABILITY:** 1,314 - 2,488 sq ft



[VIEW BROCHURE >>](#)

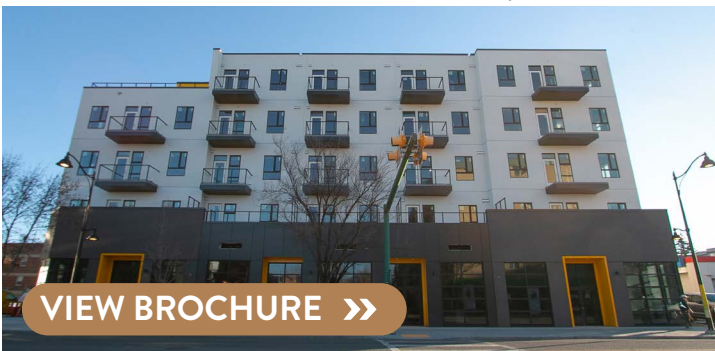
### COMMENTS

- 44 storey residential tower on the corner of 11th Avenue and 11th Street SW, with retail podium at its base
- Five minute walk from EB Downtown West-Kerby CTrain Station, Millennium Park and Bow River Pathway
- Targeted uses: quick service & sit down restaurants, specialty food, pet, beauty/wellness, medical, education, home furnishings, recreation/sport

CONTACT: BRITTANY BAKER | [bbaker@taurusgroup.com](mailto:bbaker@taurusgroup.com) | 403.629.4662 | [www.taurusgroup.com](http://www.taurusgroup.com)

## SOLO ON FOURTH - SOUTHWEST CALGARY

**AVAILABILITY:** 1,400 - 2,180 sq ft



[VIEW BROCHURE >>](#)

### COMMENTS

- Five-storey apartment situated in Mission, on the corner of 19th Avenue and 4th Street SW, with retail podium at its base
- Excellent profile to busy fourth street’s ‘Restaurant Row’, which handles 15,000 vehicles daily
- Targeted uses: sit down restaurant, quick service restaurant, pet, beauty/wellness, medical, boutique fitness

CONTACT: BRITTANY BAKER | [bbaker@taurusgroup.com](mailto:bbaker@taurusgroup.com) | 403.629.4662 | [www.taurusgroup.com](http://www.taurusgroup.com)

SW & SE CALGARY

NW & NE CALGARY

DOWNTOWN CALGARY

FEATURED LISTING

GREATER ALBERTA

100% LEASED



# HANSON SQUARE - SOUTHWEST CALGARY

AVAILABILITY: 4,107 sq ft



[VIEW BROCHURE >>](#)

## COMMENTS

- Mixed-use building on the corner of 17th Avenue & 8th Street SW, located in the heart of the retail & entertainment district
- Exposure to over 25,000 vehicles and 8,700 pedestrians passing the site daily
- Street front and underground public parking available
- Co-tenants includes: Best Buy, Myodetox, Mogoyan Noodles, TD Bank, Era Style Loft and Mirra Masa

CONTACT: ABBY BILLARD | [abillard@taurusgroup.com](mailto:abillard@taurusgroup.com) | 403.200.9935 | [www.taurusgroup.com](http://www.taurusgroup.com)

# TRANSALTA PLACE - SOUTHWEST CALGARY

AVAILABILITY: 2,968 sq ft



[VIEW BROCHURE >>](#)

## COMMENTS

- Surrounded by two residential towers making up the premier commercial development, Keynote Urban Village
- Situated between downtown Calgary and the Beltline, providing convenient access to the LRT and Stampede grounds
- Co-tenancies include: Sunterra Market, 5 Vines, Starbuck and Muse Aesthetics

CONTACT: ABBY BILLARD | [abillard@taurusgroup.com](mailto:abillard@taurusgroup.com) | 403.200.9935 | [www.taurusgroup.com](http://www.taurusgroup.com)

SW & SE CALGARY

NW & NE CALGARY

DOWNTOWN CALGARY

FEATURED LISTING

GREATER ALBERTA

100% LEASED

## WILLOW PARK VILLAGE - SOUTHEAST CALGARY

NEW VACANCY

AVAILABILITY: 2,972 sq ft



VIEW BROCHURE >>

### COMMENTS

- 112,000 sq ft open-air shopping mall on Macleod Trail, shadow anchored by South Centre Mall
- Primarily local boutiques offering a wide variety of products with 15 retailers exclusive to the centre
- Co-tenants include: Deville Coffee, Cobs Bread, Belmont Diner Code Ninjas, Crave Cupcakes and more!

CONTACT: ABBY BILLARD | [abillard@taurusgroup.com](mailto:abillard@taurusgroup.com) | 403.200.9935 | [www.taurusgroup.com](http://www.taurusgroup.com)

## SHAWNESSY STATION - SOUTHEAST CALGARY

ONE BAY REMAINING

AVAILABILITY: 1,206 sq ft



VIEW BROCHURE >>

### COMMENTS

- Three-phase, mixed-use development along Macleod Trail with 169 residential suites above 22,704 sf of main-level retail in first phase
- Exposure to over 90,000 vehicles daily and high volumes of pedestrian traffic with LRT Station directly adjacent from site
- Targeted Uses: coffee, specialty food, pet, pharmacy

CONTACT: BRITTANY BAKER | [bbaker@taurusgroup.com](mailto:bbaker@taurusgroup.com) | 403.629.4662 | [www.taurusgroup.com](http://www.taurusgroup.com)

## KEYNOTE R2 - SOUTHWEST CALGARY

NEW LISTING

AVAILABILITY: 4,787 sq ft



VIEW BROCHURE >>

### COMMENTS

- Fully built out restaurant space available
- Mixed-use building within the Keynote Urban Village complex
- Comprised of two residential towers with 250 suites
- Located in Victoria Park, facing 11th Avenue SE - a major traffic artery in the neighbourhood

CONTACT: ABBY BILLARD | [abillard@taurusgroup.com](mailto:abillard@taurusgroup.com) | 403.200.9935 | [www.taurusgroup.com](http://www.taurusgroup.com)

SW & SE CALGARY

NW & NE CALGARY

DOWNTOWN CALGARY

FEATURED LISTING

GREATER ALBERTA

100% LEASED

## UXBOROUGH - NORTHWEST CALGARY

**AVAILABILITY:** Phase 1: 1,150 - 9,400 sq ft



[VIEW BROCHURE >>](#)

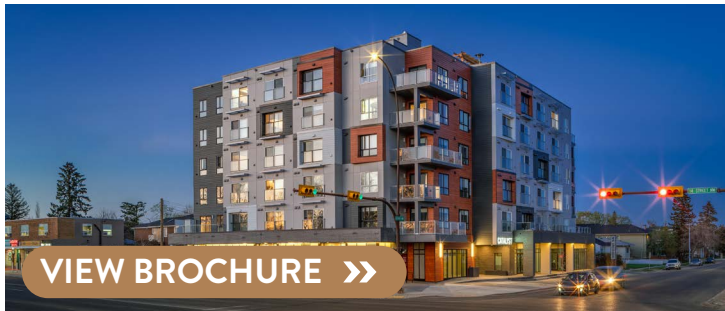
### COMMENTS

- Exceptional mixed-use development located immediately across from Foothills Medical Centre and Calgary Cancer Center
- Exposure to over 54,000 vehicles daily on the TransCanada Highway and high volumes of pedestrian traffic accessing the nearby hospital and university
- Co-tenancies: Willowbrae Daycare, Good Habit Co

CONTACT: ABBY BILLARD | [abillard@taurusgroup.com](mailto:abillard@taurusgroup.com) | 403.200.9935 | [www.taurusgroup.com](http://www.taurusgroup.com)

## CATALYST - NORTHWEST CALGARY

**AVAILABILITY:** 1,141 sq ft



[VIEW BROCHURE >>](#)

**ONE BAY REMAINING**

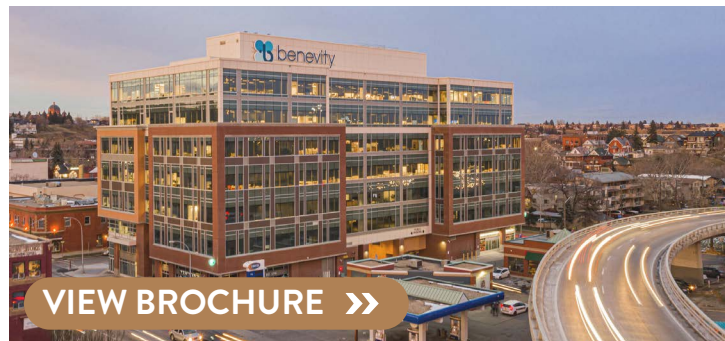
### COMMENTS

- Six storey mixed-use development with 75 apartments above 6,200 square feet of main floor retail space
- On the corner of 14th Street and 20th Avenue, with 40,000 vehicles passing intersection and 10 min walk from SAIT
- 22 visitor parking stalls available & ample surrounding street parking

CONTACT: ABBY BILLARD | [abillard@taurusgroup.com](mailto:abillard@taurusgroup.com) | 403.200.9935 | [www.taurusgroup.com](http://www.taurusgroup.com)

## MEREDITH BLOCK - NORTHEAST CALGARY

**AVAILABILITY:** 2,800 sq ft ; 4,000 sq ft



[VIEW BROCHURE >>](#)

### COMMENTS

- Mixed-use building nestled between 4th Street NE and Edmonton Trail, fronting onto Meredith Road NE
- Less than a 15 min walk to downtown and 5 min walk to Bridgeland LRT station
- Targeted uses: health & beauty, specialty medical, food & beverage and pet services

CONTACT: ABBY BILLARD | [abillard@taurusgroup.com](mailto:abillard@taurusgroup.com) | 403.200.9935 | [www.taurusgroup.com](http://www.taurusgroup.com)

<b>SW &amp; SE CALGARY</b>	<b>NW &amp; NE CALGARY</b>	<b>DOWNTOWN CALGARY</b>
<b>FEATURED LISTING</b>	<b>GREATER ALBERTA</b>	<b>100% LEASED</b>



## ROYAL VISTA CENTRE I - NORTHWEST CALGARY

AVAILABILITY: 2,596 sq ft



### COMMENTS

- In Royal Visa Business Park, a master planned employment node with commercial and light industrial uses
- Quick access to Crowchild Trail, Stoney Trail and Country Hills Boulevard and minutes away from airport, Foothills Hospital and University of Calgary
- Targeted uses: medical/medical esthetics, pet, boutique fitness, learning/educational, cafe, dessert, deli

CONTACT: BRITTANY BAKER | [bbaker@taurusgroup.com](mailto:bbaker@taurusgroup.com) | 403.629.4662 | [www.taurusgroup.com](http://www.taurusgroup.com)

## ROYAL VISTA CENTRE II - NORTHWEST CALGARY

AVAILABILITY: 1,558 sq ft ; 3,089 sq ft



### COMMENTS

- In Royal Visa Business Park, a master planned employment node with commercial and light industrial uses
- Located on 112 Avenue (16,000 vpd) with easy access to Country Hills Boulevard (38,000 vpd)
- Co-tenancies include: 7-Eleven, Mr.Lube, Code Ninjas, Pho Van Vietnamese and Joso's Play Centre

CONTACT: BRITTANY BAKER | [bbaker@taurusgroup.com](mailto:bbaker@taurusgroup.com) | 403.629.4662 | [www.taurusgroup.com](http://www.taurusgroup.com)

SW & SE CALGARY

NW & NE CALGARY

DOWNTOWN CALGARY

FEATURED LISTING

GREATER ALBERTA

100% LEASED

# BROOKFIELD PLACE - DOWNTOWN CALGARY

NEW VACANCY

AVAILABILITY: Main: 2,300 sq ft; 275 sq ft Food Court: 452 sq ft



## COMMENTS

- In the heart of downtown located along the LRT line and connected directly to Stephen Avenue Place and Bow Valley Square through the Plus 15 network
- Over 2,200 people working in the tower per weekday
- Co-tenancies: Hula Poke, Dirtbelly, Deville, Chachi's, Canadian Crew Barbershop and Dr.Chong's Chiropractic Care

VIEW BROCHURE >>

CONTACT: BRITTANY BAKER | [bbaker@taurusgroup.com](mailto:bbaker@taurusgroup.com) | 403.629.4662 | [www.taurusgroup.com](http://www.taurusgroup.com)

# BANKERS HALL - DOWNTOWN CALGARY

NEW VACANCY

AVAILABILITY: 495 - 7,368 sq ft



## COMMENTS

- Five storey glass atrium at the base of two 52-storey office towers
- Premiere office address and retail hub in downtown Calgary
- Plus 15 connected into The Core, Royal Bank Building, Gulf Canada Square & Bankers Court
- First class, mixed-use shopping environment with retailers offering unique high quality merchandise

VIEW BROCHURE >>

CONTACT: BRITTANY BAKER | [bbaker@taurusgroup.com](mailto:bbaker@taurusgroup.com) | 403.629.4662 | [www.taurusgroup.com](http://www.taurusgroup.com)

# STEPHEN AVENUE PLACE - DOWNTOWN CALGARY

AVAILABILITY: 582 - 9,261 sq ft



## COMMENTS

- Three level, high profile retail podium at the base of a 40 floor office tower with direct access to Stephen Avenue
- Centrally located in Calgary's downtown core; connected to The Bay, The Core and Brookfield Place via Plus 15
- Recent extensive renovation, including main level restaurant, Barbarella; a future Plus 15 food hall; and 40th floor restaurant, Major Tom, listed as one of 'Canada's Top 100 Best Restaurants in 2022'

VIEW BROCHURE >>

CONTACT: ABBY BILLARD | [abillard@taurusgroup.com](mailto:abillard@taurusgroup.com) | 403.200.9935 | [www.taurusgroup.com](http://www.taurusgroup.com)

SW & SE CALGARY	NW & NE CALGARY	DOWNTOWN CALGARY
FEATURED LISTING	GREATER ALBERTA	100% LEASED

## THE AMPERSAND - DOWNTOWN CALGARY

AVAILABILITY: 724 sq ft ; 4,436 sq ft



### COMMENTS

- Three tower, A-class office complex that was recently renovated to showcase a 20,000 square foot, glass atrium that includes a library, social staircase, café and food-truck market
- Connected to the TransCanada building and The Harmony Parkade through the Plus 15
- Steps away from Chinatown, Eau Claire, the Bow River pathway and East Village

[VIEW BROCHURE >>](#)

CONTACT: ABBY BILLARD | [abillard@taurusgroup.com](mailto:abillard@taurusgroup.com) | 403.200.9935 | [www.taurusgroup.com](http://www.taurusgroup.com)

## THE EDISON - DOWNTOWN CALGARY

AVAILABILITY: 5,300 sq ft



[VIEW BROCHURE >>](#)

### COMMENTS

- 28-storey office tower located on the corner of 1st Street and 9th Avenue SW, in Calgary’s downtown commercial district
- Renovated and repositioned in 2017 to attract creative and tech industries - office component currently 80% leased
- Offers a variety of amenities, dedicated for building tenants, including an iron lab fitness facility, golf simulator, basketball court, outdoor patio and café with views from the 28th level

CONTACT: ABBY BILLARD | [abillard@taurusgroup.com](mailto:abillard@taurusgroup.com) | 403.200.9935 | [www.taurusgroup.com](http://www.taurusgroup.com)

## MILLENNIUM TOWER - DOWNTOWN CALGARY

AVAILABILITY: 2,802 sq ft



[VIEW BROCHURE >>](#)

### COMMENTS

- Class A, 25-storey office tower on the corner of 4th Street and 2nd Avenue SW, situated in the Eau Claire district
- Connected to the Devon Tower and Sheraton Suite Eau Claire through the Plus 15 network
- Office is 100% leased
- Daytime population over 55,000 in a 10 minute walking radius

CONTACT: ABBY BILLARD | [abillard@taurusgroup.com](mailto:abillard@taurusgroup.com) | 403.200.9935 | [www.taurusgroup.com](http://www.taurusgroup.com)

<b>SW &amp; SE CALGARY</b>	<b>NW &amp; NE CALGARY</b>	<b>DOWNTOWN CALGARY</b>
<b>FEATURED LISTING</b>	<b>GREATER ALBERTA</b>	<b>100% LEASED</b>



## FIFTH AVENUE PLACE - DOWNTOWN CALGARY

**AVAILABILITY:** Main Level: 2,950 sq ft Food Court: 485 sq ft



[VIEW BROCHURE >>](#)

### COMMENTS

- Two tower complex encompassing 1.5 million sq ft of office space with 43,000 sq ft of retail area
- Retail podium includes a large food court, drug store and several other amenity retailers
- Centrally located and connected in all four directions to the Plus 15
- Co-tenancies: Oeb Breakfast, Subway, Servus, Mercatino, Monogram

CONTACT: BRITTANY BAKER | [bbaker@taurusgroup.com](mailto:bbaker@taurusgroup.com) | 403.629.4662 | [www.taurusgroup.com](http://www.taurusgroup.com)

## CENTRIUM PLACE - DOWNTOWN CALGARY

**AVAILABILITY:** 646 - 1,851 sq ft



[VIEW BROCHURE >>](#)

### COMMENTS

- 15-storey office tower located on the corner of 3rd Street and 6th Avenue SW - a dense area of downtown with a daytime population over 10,500 within a 1 block radius
- Direct plus 15 access to First Canadian Centre, Intact Place, 505 Third and 333 Fifth Avenue
- Within walking distance of the LRT, CORE Shopping Centre and the Bow River Pathway

CONTACT: ABBY BILLARD | [abillard@taurusgroup.com](mailto:abillard@taurusgroup.com) | 403.200.9935 | [www.taurusgroup.com](http://www.taurusgroup.com)

## STOCK EXCHANGE - DOWNTOWN CALGARY

**AVAILABILITY:** 1,028 sq ft ; 3,692 sq ft



[VIEW BROCHURE >>](#)

### COMMENTS

- 13-storey, office tower located on the corner of 2nd Street and 5th Avenue SW with over 10,000 square feet of retail servicing an employment population greater than 20,000
- Directly connected to Calgary Place, Canada Place and Fifth Avenue Place via Plus 15

CONTACT: ABBY BILLARD | [abillard@taurusgroup.com](mailto:abillard@taurusgroup.com) | 403.200.9935 | [www.taurusgroup.com](http://www.taurusgroup.com)

SW & SE CALGARY

NW & NE CALGARY

DOWNTOWN CALGARY

FEATURED LISTING

GREATER ALBERTA

100% LEASED

# FIFTH & FIFTH - DOWNTOWN CALGARY

AVAILABILITY: 302 - 1,185 sq ft



[VIEW BROCHURE >>](#)

## COMMENTS

- 34 storey office tower in Calgary’s downtown core with a recently renovated main floor and plus 15
- Plus 15 connected in four directions, averaging more than 16,000 pedestrians daily
- Site showcases two levels of retail and services including a food court, dentist, barber, convenience store and jewellery store

CONTACT: ABBY BILLARD | [abillard@taurusgroup.com](mailto:abillard@taurusgroup.com) | 403.200.9935 | [www.taurusgroup.com](http://www.taurusgroup.com)

# BANKERS COURT - DOWNTOWN CALGARY

AVAILABILITY: 499 sq ft



[VIEW BROCHURE >>](#)

## COMMENTS

- 100% office occupied
- Direct connection to Bankers Hall shopping atrium, containing fashion, food and health service providers
- Café Alchemist recently opened early 2020
- Plus 15 connection to The Edison planned

CONTACT: BRITTANY BAKER | [bbaker@taurusgroup.com](mailto:bbaker@taurusgroup.com) | 403.629.4662 | [www.taurusgroup.com](http://www.taurusgroup.com)

# BOW PARKADE - DOWNTOWN CALGARY

AVAILABILITY: 1,000 sq ft ; 2,627 sq ft



[VIEW BROCHURE >>](#)

## COMMENTS

- The 846 stall Bow Parkade is located on a prominent corner beside Calgary’s tallest tower, Brookfield Place Calgary
- Directly adjacent from the LRT station and connected to Intact Place and Brookfield Place via the Plus 15
- Car rental opportunity available

CONTACT: BRITTANY BAKER | [bbaker@taurusgroup.com](mailto:bbaker@taurusgroup.com) | 403.629.4662 | [www.taurusgroup.com](http://www.taurusgroup.com)

<b>SW &amp; SE CALGARY</b>	<b>NW &amp; NE CALGARY</b>	<b>DOWNTOWN CALGARY</b>
<b>FEATURED LISTING</b>	<b>GREATER ALBERTA</b>	<b>100% LEASED</b>



# DIAMOND VIEW MARKETPLACE - DIAMOND VALLEY

AVAILABILITY: 1,200 - 11,000 sq ft (Freestanding CRUs ; Drive Thru Opportunity)



## COMMENTS

- Fronts onto Highway 22 and nestled between Willow Ridge Blvd and Township Road 201
- Design build, drive thru and car wash opportunities
- Targeted uses: full-service restaurant, quick-service drive thru, gas bar, convenience store

CONTACT: ABBY BILLARD | [abillard@taurusgroup.com](mailto:abillard@taurusgroup.com) | 403.200.9935 | [www.taurusgroup.com](http://www.taurusgroup.com)

# 102 6 AVENUE SE - MEDICINE HAT

AVAILABILITY: 1,388 sq ft



## COMMENTS

- Prominent corner site at SW corner of 6th Avenue and 1 Street SE
- Excellent on-site parking
- Close proximity to City Hall, Law Courts and Riverside Veteran's Memorial Park

CONTACT: BRITTANY BAKER | [bbaker@taurusgroup.com](mailto:bbaker@taurusgroup.com) | 403.629.4662 | [www.taurusgroup.com](http://www.taurusgroup.com)

SW & SE CALGARY

NW & NE CALGARY

DOWNTOWN CALGARY

FEATURED LISTING

GREATER ALBERTA

100% LEASED



# 100% LEASED

**ABERDEEN MARKET**



**BEDDINGTON TOWNE CENTRE**



**COUNTRY HILLS VILLAGE**



**CREEKSIDE CROSSING**



**EVOLUTION**



**FIRST ST MARKET**



**MAXWELL BATES BLOCK**



**SOUTH CENTRE COMMON**



**TROLLEY SQUARE**



**WATERMARK TOWER**



**SW & SE CALGARY**

**FEATURED LISTING**

**NW & NE CALGARY**

**GREATER ALBERTA**

**DOWNTOWN CALGARY**

**100% LEASED**