



ASPEN VILLAGE

1851 80th Street SW Calgary, Alberta

HEATHER WIETZEL

Direct: (403) 206-6046
hwietzel@taurusgroup.com

ABOUT

BUILDING HIGHLIGHTS

Aspen Village is a 13-acre, Scandinavian-inspired community nestled on the side of Springbank Hill, a highly desirable neighbourhood in SW Calgary.

- Facing 17th Ave SW, with 21,000 vehicles passing the site daily
- The development will feature 1,200 homes spread across 15 buildings
- The heart of this new community will feature a 60,000 square foot urban village, featuring boutique-style shops, wellness centre, restaurants, cafes, and a grocer
- Phase I targeted uses: food & beverage, specialty food, beauty / esthetics, pet service, apparel and home goods

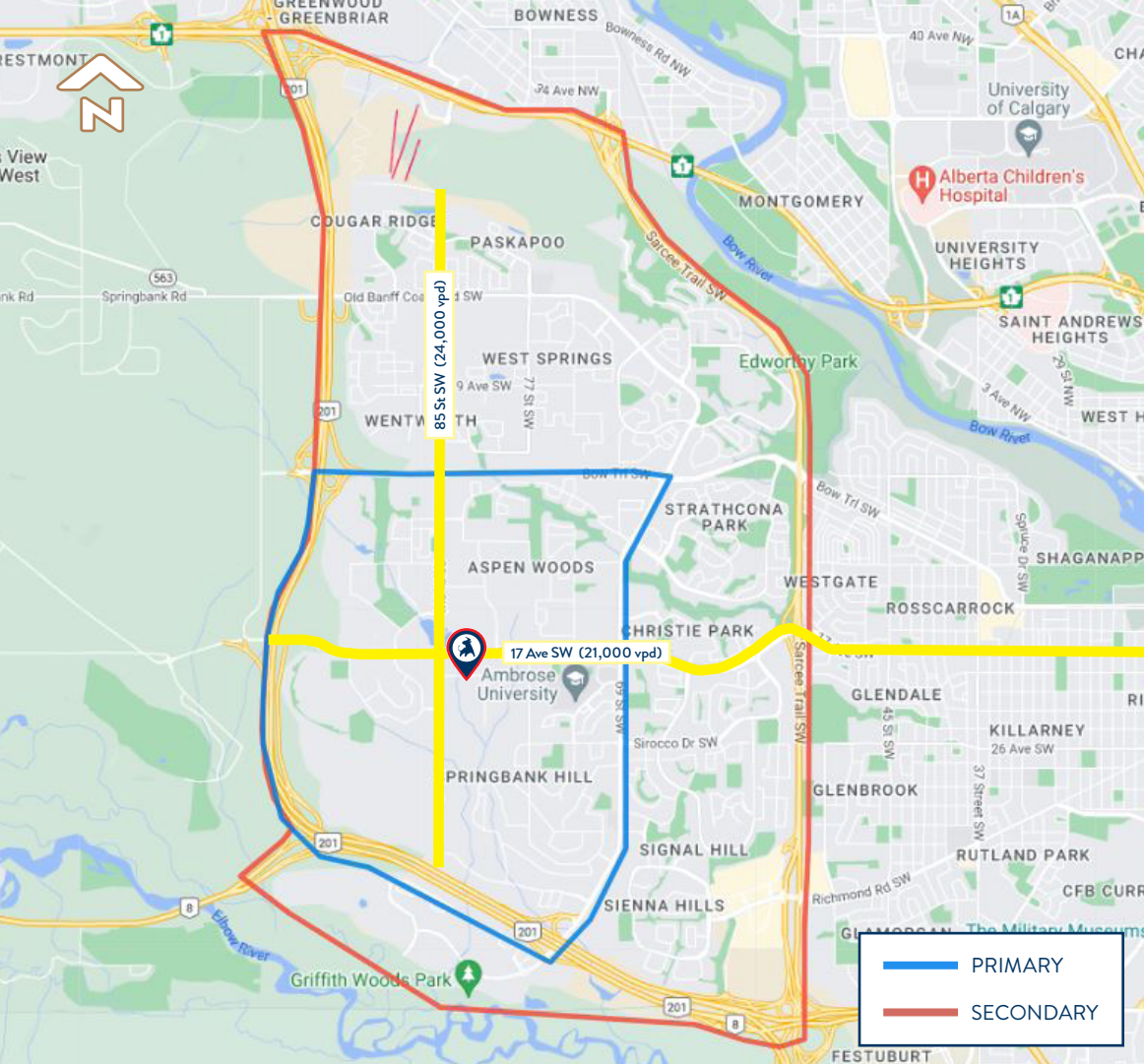


ABOUT

LOCATION HIGHLIGHTS

- > Will service the communities of Aspen Woods, Springbank Hill, Signal Hill, Strathcona Park, West Springs and Cougar Ridge, with a combined population over 54,800
- > Destination draw for people travelling west of Stoney Trail all the way to Highway 22
- > Four large-scale educational institutions, an LRT station and recreation centre within a 15 minute walk radius
- > One of the most affluent areas in Calgary, with average household incomes over \$230,000





COMMUNITY

DEMOGRAPHIC DATA

POPULATION

Primary:	21,953
Secondary:	69,112
Calgary (2025):	1,688,000

AVG HOUSEHOLD INCOME:

Primary:	\$ 230,722
Secondary:	\$ 191,883
Calgary (2025):	\$ 131,600

AVG ANNUAL HOUSEHOLD SPENDING

Primary:	\$ 196,272
Secondary:	\$ 161,392
Calgary:	\$ 109,738

AVG ANNUAL HOUSEHOLD SPENDING ON HEALTH CARE

Primary:	\$ 4,828
Secondary:	\$ 3,970
Calgary:	\$ 2,699

AVG ANNUAL HOUSEHOLD SPENDING ON RESTAURANT MEALS

Primary:	\$ 5,474
Secondary:	\$ 4,501
Calgary:	\$ 3,061

AVG ANNUAL HOUSEHOLD SPENDING ON FOOD PURCHASED FROM STORES

Primary:	\$ 15,714
Secondary:	\$ 12,921
Calgary:	\$ 8,786



BUILDING

PROPERTY DETAILS

CENTRE SQUARE FOOTAGE

Community Size: 1,280,000 square feet

Retail Size: 60,000 square feet

LANDLORD

Vesta Properties

ZONING

MU-1

COMPLETION

Phase I: Summer 2027

PARKING

64 surface level retail stalls

265 underground retail stalls

LEGAL DESCRIPTION

Plan: 241 1184

Block: 39 & 40

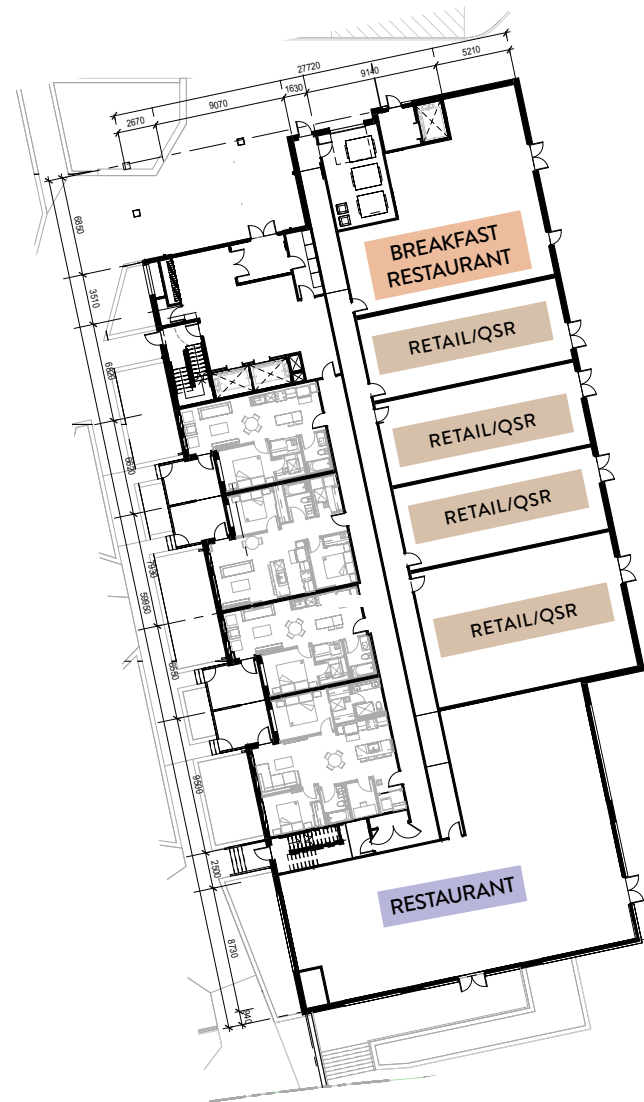
Lot: 1



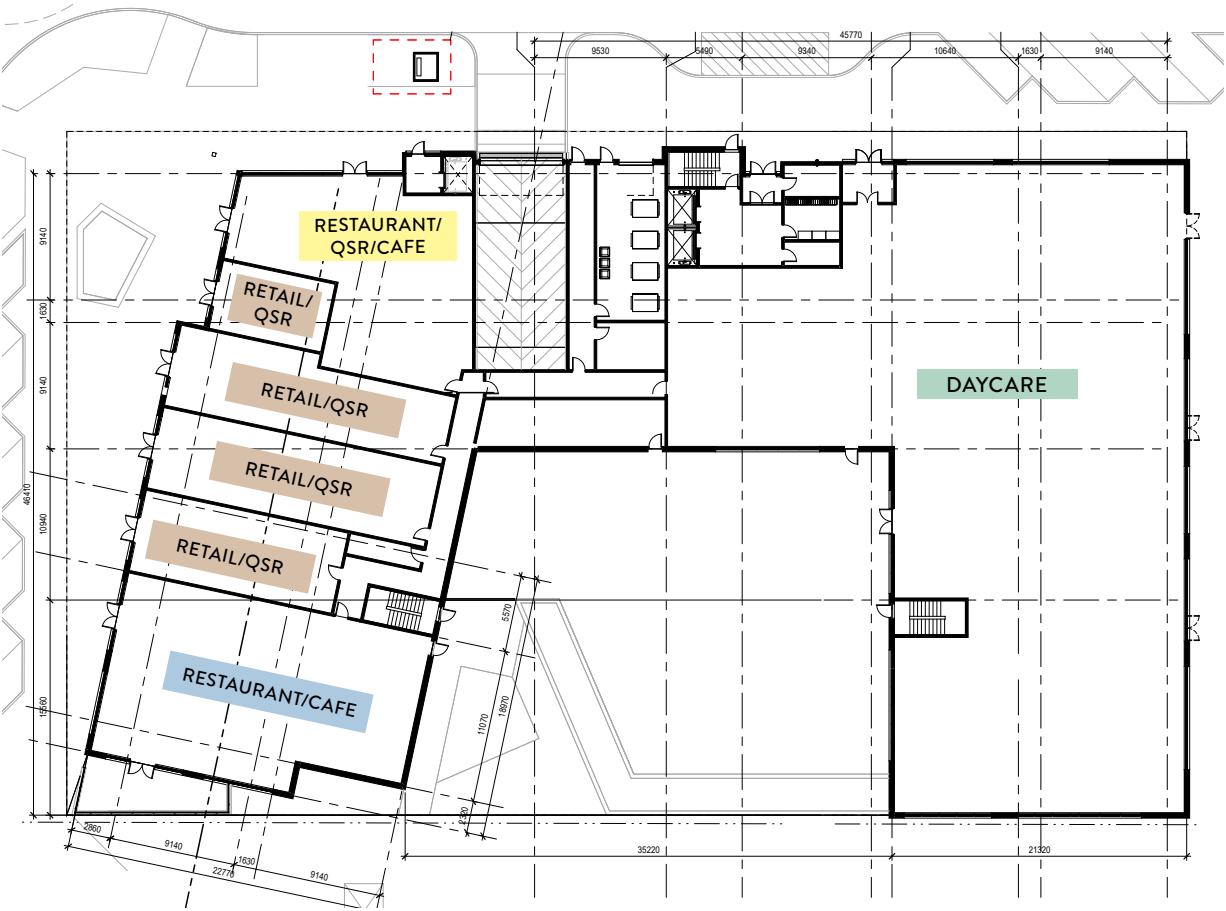
SITE PLAN



PHASE I RETAIL - SUMMER 2027

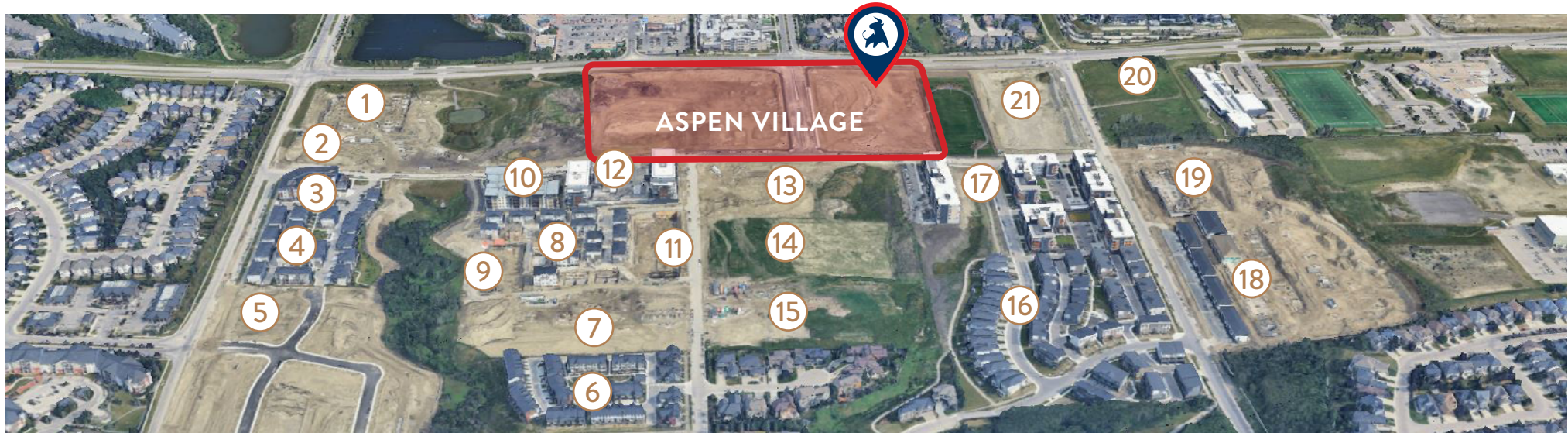


BUILDING 8



BUILDING 9

FUTURE SURROUNDING PROJECTS



	Project Name	Developer	Built Form	Type	Status	Unit Count
1	Age Care Ltd	Age Care	Apartment	Seniors / LTC	Under Construction	344
2	Cobalt	Slokker	Apartment	Condo	Proposed	271
3	The Orion	Slokker	Apartment	Condo	Complete	45
4	Aspen Springs Townhouse	Slokker	Townhouse	Condo	Complete	98
5	Elowen	Shane Homes	Townhouse	Condo	Proposed	23
6	Wildflower	Homes by Avi	Townhouse	Condo	Complete	68
7	Juniper	Slokker	Townhouse	Condo	Under Construction	112
8	Elkwood	Slokker	Townhouse	Condo	Complete	100
9	Whitney	Cove Properties	Apartment	Condo	Under Construction	60
10	85th & Park	Cove Properties	Apartment	Condo	Complete	68
11	Balsam	Slokker	Apartment	Rental	Proposed	131
12	Springbank Hill Estates	Spray Group	Apartment	Rental	Complete	92
13	Wolfberry	Slokker	Apartment	Condo	Proposed	540
14	TBD	TBD	TBD	TBD	Land-Use	TBD
15	Aurora	Slokker	Apartment	Condo	Proposed	77
16	Arcola	Truman	Townhouse	Condo	Complete	87
17	The Willows	Truman	Apartment	Rental	Complete	389
18 / 19	Summit 77 Townhouse and Apartments	Partners Development Group	Townhouse Apartment	Rental	Complete Under Construction	418
20	7755 17 Ave SW	TBD	Apartment	TBD	Land-Use	~ 600
21	The Grand	Truman	Apartment	Condo	Proposed	735

CONNECT WITH US

CONTACT

GENERAL



Corporate: (403) 206-2131
Leasing: (403) 206-2130



Suite 1150, 333 11 Avenue SW,
Calgary, Alberta, T2R 1L9



inquiries@taurusgroup.com



taurusgroup.com

ABOUT THIS LISTING

HEATHER WIETZEL



Direct: (403) 206-6046



Suite 1150, 333 11 Avenue SW,
Calgary, Alberta, T2R 1L9



hwietzel@taurusgroup.com

ADVISOR AND ADVOCATE FOR OWNERS AND DEVELOPERS OF RETAIL AND MIXED USE PROPERTY

We conduct ourselves at all times with integrity, with the objective of building long-term relationships based on trust and positive results; our primary focus is on building and sustaining the value of our clients' assets over time.

